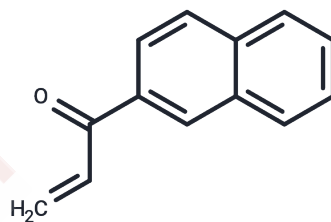


ZM 449829

## Chemical Properties

CAS No. : 4452-06-6  
 Formula: C<sub>13</sub>H<sub>10</sub>O  
 Molecular Weight: 182.222  
 Storage: Powder: -20°C for 3 years | In solvent: -80°C for 1 year  
 Actual storage temperature shall be subject to the COA.



## Biological Description

Description	ZM 449829 is an effective, selective inhibitor of Janus tyrosine kinase 3 which binds competitively to the JAK3 ATP site (pIC <sub>50</sub> : 6.8, 5.0, 4.7, and < 5.0 for JAK3, EGFR, JAK1 and CDK4 respectively).
Targets(IC <sub>50</sub> )	EGFR,Others,JAK

## Solubility Information

Solubility	H <sub>2</sub> O: <1 mg/mL, DMSO: ≥8.2 mg/mL, Sonication is recommended. Ethanol: <1 mg/mL, (< 1 mg/ml refers to the product slightly soluble or insoluble)
In vivo Formulation	10% DMSO+90% Corn Oil: 0.5 mg/mL (2.74 mM), Sonication is recommended. <i>Please add the solvents sequentially, clarifying the solution as much as possible before adding the next one. Dissolve by heating and/or sonication if necessary. Working solution is recommended to be prepared and used immediately. The formulation provided above is for reference purposes only. In vivo formulations may vary and should be modified based on specific experimental conditions.</i>

## Preparing Stock Solutions

	1mg	5mg	10mg
1 mM	5.4879 mL	27.4394 mL	54.8787 mL
5 mM	1.0976 mL	5.4879 mL	10.9757 mL
10 mM	0.5488 mL	2.7439 mL	5.4879 mL
50 mM	0.1098 mL	0.5488 mL	1.0976 mL

Please select the appropriate solvent to prepare the stock solution, according to the solubility of the product in different solvents. Please use it as soon as possible.

Note: The dilution table applies only to solid products. For liquid products, please calculate the stock solution based on the stated concentration and/or density.

**Inhibitor · Natural Compounds · Compound Libraries · Recombinant Proteins**

This product is for Research Use Only · Not for Human or Veterinary or Therapeutic Use

Tel:781-999-4286 E\_mail:info@targetmol.com Address:34 Washington Street,Wellesley Hills,MA 02481