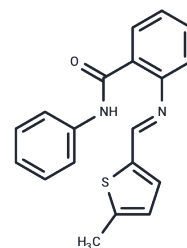


Retro-2

Chemical Properties

CAS No. :	1201652-50-7
Formula:	C ₁₉ H ₁₆ N ₂ O ₂ S
Molecular Weight:	320.41
Storage:	Powder: -20°C for 3 years In solvent: -80°C for 1 year Actual storage temperature shall be subject to the COA.



Biological Description

Description	Retro-2 (2-((5-methyl-2-thienyl)methylene)amino)) is a plant toxin ricin inhibitor, it protects HeLa cells against Ricin, Stx1 and Stx2, selectively blocks retrograde toxin trafficking at the early endosome-TGN (trans-Golgi network) interface.
Targets(IC50)	Parasite, Autophagy, Virus Protease

Solubility Information

Solubility	DMSO: 20 mg/mL (62.42 mM), Sonication is recommended. (< 1 mg/ml refers to the product slightly soluble or insoluble)
In vivo Formulation	10% DMSO+90% Corn Oil: 2 mg/mL (6.24 mM), Sonication is recommended. <i>Please add the solvents sequentially, clarifying the solution as much as possible before adding the next one. Dissolve by heating and/or sonication if necessary. Working solution is recommended to be prepared and used immediately. The formulation provided above is for reference purposes only. In vivo formulations may vary and should be modified based on specific experimental conditions.</i>

Preparing Stock Solutions

	1mg	5mg	10mg
1 mM	3.121 mL	15.605 mL	31.210 mL
5 mM	0.6242 mL	3.121 mL	6.242 mL
10 mM	0.3121 mL	1.5605 mL	3.121 mL
50 mM	0.0624 mL	0.3121 mL	0.6242 mL

Please select the appropriate solvent to prepare the stock solution, according to the solubility of the product in different solvents. Please use it as soon as possible.

Note: The dilution table applies only to solid products. For liquid products, please calculate the stock solution based on the stated concentration and/or density.

Reference

Morgens D W , Chan C , Kane A J , et al. Retro-2 protects cells from ricin toxicity by inhibiting ASNA1-mediated ER targeting and insertion of tail-anchored proteins[J]. eLife Sciences, 2019, 8.

Inhibitor · Natural Compounds · Compound Libraries · Recombinant Proteins

This product is for Research Use Only· Not for Human or Veterinary or Therapeutic Use

Tel:781-999-4286 E_mail:info@targetmol.com Address:34 Washington Street,Wellesley Hills,MA 02481