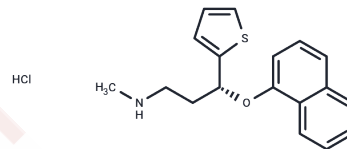


## (R)-Duloxetine Hydrochloride

## Chemical Properties

CAS No. :	910138-96-4
Formula:	C <sub>18</sub> H <sub>20</sub> ClNOS
Molecular Weight:	333.87
Storage:	Powder: -20°C for 3 years   In solvent: -80°C for 1 year Actual storage temperature shall be subject to the COA.



## Biological Description

Description	(R)-Duloxetine Hydrochloride is a naphthalenyloxy-substituted amine used in binding studies of human serum albumin along with (S)-Duloxetine. Unlike its enantiomer, it is not a very effective dual serotonin and norepinephrine reuptake inhibitor (SNRI).
Targets(IC50)	Others,Serotonin Transporter

## Preparing Stock Solutions

	1mg	5mg	10mg
1 mM	2.9952 mL	14.9759 mL	29.9518 mL
5 mM	0.599 mL	2.9952 mL	5.9904 mL
10 mM	0.2995 mL	1.4976 mL	2.9952 mL
50 mM	0.0599 mL	0.2995 mL	0.599 mL

Please select the appropriate solvent to prepare the stock solution, according to the solubility of the product in different solvents. Please use it as soon as possible.

Note: The dilution table applies only to solid products. For liquid products, please calculate the stock solution based on the stated concentration and/or density.

Inhibitor · Natural Compounds · Compound Libraries · Recombinant Proteins

This product is for Research Use Only· Not for Human or Veterinary or Therapeutic Use

Tel:781-999-4286 E\_mail:info@targetmol.com Address:34 Washington Street,Wellesley Hills,MA 02481