

CS 722

## Chemical Properties

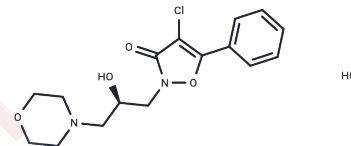
CAS No. : 144886-17-9

Formula: C<sub>16</sub>H<sub>20</sub>Cl<sub>2</sub>N<sub>2</sub>O<sub>4</sub>

Molecular Weight: 375.25

Storage: Powder: -20°C for 3 years | In solvent: -80°C for 1 year

Actual storage temperature shall be subject to the COA.



## Biological Description

Description	CS 722 is a centrally acting muscle relaxant. CS-722 exerts its muscle relaxant action by affecting both the supraspinal structure and the spinal cord.
Targets(IC50)	Others,Endogenous Metabolite

## Preparing Stock Solutions

	1mg	5mg	10mg
1 mM	2.6649 mL	13.3245 mL	26.6489 mL
5 mM	0.533 mL	2.6649 mL	5.3298 mL
10 mM	0.2665 mL	1.3324 mL	2.6649 mL
50 mM	0.0533 mL	0.2665 mL	0.533 mL

Please select the appropriate solvent to prepare the stock solution, according to the solubility of the product in different solvents. Please use it as soon as possible.

Note: The dilution table applies only to solid products. For liquid products, please calculate the stock solution based on the stated concentration and/or density.

## Reference

Tanabe M, Kaneko T. Preferential enhancement of inhibitory synaptic transmission by CS-722 in the ventral horn neurons of neonatal rat spinal cord. Eur J Pharmacol. 1996 Oct 17;313(3):187-9. PubMed PMID: 8911914.

Marszalec W, Song JH, Narahashi T. The effects of the muscle relaxant, CS-722, on synaptic activity of cultured neurones. Br J Pharmacol. 1996 Sep;119(1):126-32. PubMed PMID: 8872365; PubMed Central PMCID: PMC1915728.

Tanabe M, Ishizuka H, Murayama T, Kaneko T, Tonohiro T, Sakai J, Nagano M, Sasahara K, Iwata N. Sites of action of CS-722, a newly synthesized centrally acting muscle relaxant. Jpn J Pharmacol. 1993 Nov;63(3):385-9. PubMed PMID: 8107330.

Tanabe M, Kaneko T, Tonohiro T, Iwata N. The pharmacological properties of CS-722, a newly synthesized centrally acting muscle relaxant. Neuropharmacology.

**Inhibitor · Natural Compounds · Compound Libraries · Recombinant Proteins**

This product is for Research Use Only · Not for Human or Veterinary or Therapeutic Use

Tel:781-999-4286 E\_mail:info@targetmol.com Address:34 Washington Street,Wellesley Hills,MA 02481