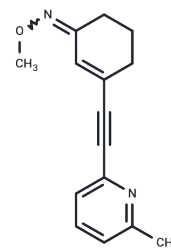


ABP688

Chemical Properties

CAS No. : 924298-51-1
 Formula: C₁₅H₁₆N₂O
 Molecular Weight: 240.3
 Storage: Powder: -20°C for 3 years | In solvent: -80°C for 1 year
 Actual storage temperature shall be subject to the COA.



Biological Description

Description	ABP688 is a non-competitive and selective mGluR5 antagonist (K _i = 1.7 nM). ABP688 can be used as a PET tracer for clinical imaging.
Targets(IC50)	GluR

Solubility Information

Solubility	DMSO: 2.45 mg/mL (10.2 mM), Sonication is recommended. (< 1 mg/ml refers to the product slightly soluble or insoluble)
------------	---

Preparing Stock Solutions

	1mg	5mg	10mg
1 mM	4.1615 mL	20.8073 mL	41.6146 mL
5 mM	0.8323 mL	4.1615 mL	8.3229 mL
10 mM	0.4161 mL	2.0807 mL	4.1615 mL
50 mM	0.0832 mL	0.4161 mL	0.8323 mL

Please select the appropriate solvent to prepare the stock solution, according to the solubility of the product in different solvents. Please use it as soon as possible.

Note: The dilution table applies only to solid products. For liquid products, please calculate the stock solution based on the stated concentration and/or density.

Reference

- DeLorenzo C, et al. In vivo ketamine-induced changes in [¹¹C]ABP688 binding to metabotropic glutamate receptor subtype 5. *Biol Psychiatry*. 2015 Feb 1;77(3):266-275.
- DeLorenzo C, et al. Characterization of brain mGluR5 binding in a pilot study of late-life major depressive disorder using positron emission tomography and [¹¹C]ABP688. *Transl Psychiatry*. 2015 Dec 8;5:e693.
- Hintermann S, et al. ABP688, a novel selective and high affinity ligand for the labeling of mGlu5 receptors: identification, in vitro pharmacology, pharmacokinetic and biodistribution studies. *Bioorg Med Chem*. 2007 Jan 15; 15(2):903-14.
- DuBois JM, et al. Characterization of age/sex and the regional distribution of mGluR5 availability in the healthy human brain measured by high-resolution [(11)C]ABP688 PET. *Eur J Nucl Med Mol Imaging*. 2016 Jan;43(1):152-62.

Inhibitor · Natural Compounds · Compound Libraries · Recombinant Proteins

This product is for Research Use Only · Not for Human or Veterinary or Therapeutic Use

Tel:781-999-4286 E_mail:info@targetmol.com Address:34 Washington Street,Wellesley Hills,MA 02481