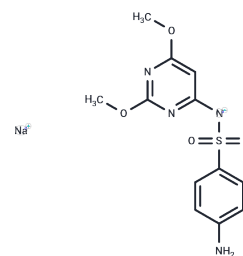


## SulfadiMethoxine sodium

## Chemical Properties

CAS No. :	1037-50-9
Formula:	C <sub>12</sub> H <sub>13</sub> N <sub>4</sub> NaO <sub>4</sub> S
Molecular Weight:	332.31
Storage:	Powder: -20°C for 3 years   In solvent: -80°C for 1 year Actual storage temperature shall be subject to the COA.



## Biological Description

Description	Sulfadimethoxine is a antimicrobial agent, treatment of respiratory, urinary tract, enteric, and soft tissue infections
Targets(IC50)	Anti-infection, Antibacterial, Antibiotic

## Solubility Information

Solubility	DMSO: 55 mg/mL (165.51 mM), Sonication is recommended. (< 1 mg/ml refers to the product slightly soluble or insoluble)
In vivo Formulation	10% DMSO+40% PEG300+5% Tween 80+45% Saline: 2 mg/mL (6.02 mM), Sonication is recommended. <i>Please add the solvents sequentially, clarifying the solution as much as possible before adding the next one. Dissolve by heating and/or sonication if necessary. Working solution is recommended to be prepared and used immediately. The formulation provided above is for reference purposes only. In vivo formulations may vary and should be modified based on specific experimental conditions.</i>

## Preparing Stock Solutions

	1mg	5mg	10mg
1 mM	3.0092 mL	15.0462 mL	30.0924 mL
5 mM	0.6018 mL	3.0092 mL	6.0185 mL
10 mM	0.3009 mL	1.5046 mL	3.0092 mL
50 mM	0.0602 mL	0.3009 mL	0.6018 mL

Please select the appropriate solvent to prepare the stock solution, according to the solubility of the product in different solvents. Please use it as soon as possible.

Note: The dilution table applies only to solid products. For liquid products, please calculate the stock solution based on the stated concentration and/or density.

Reference

Lingfeng D , Shaoju C , Yuqian H , et al. Influence of sulfadimethoxine (SDM) and sulfamethazine (SM) on anammox bioreactors: Performance evaluation and bacterial community characterization[J]. Bioresource Technology, 2018:S0960852418307272-.

**Inhibitor · Natural Compounds · Compound Libraries · Recombinant Proteins**

This product is for Research Use Only· Not for Human or Veterinary or Therapeutic Use

Tel:781-999-4286 E\_mail:info@targetmol.com Address:34 Washington Street,Wellesley Hills,MA 02481