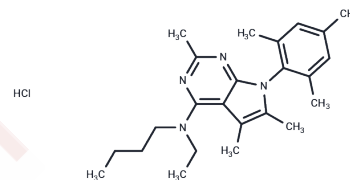


Antalarmin hydrochloride

Chemical Properties

CAS No. :	220953-69-5
Formula:	C ₂₄ H ₃₅ ClN ₄
Molecular Weight:	415.02
Storage:	Powder: -20°C for 3 years In solvent: -80°C for 1 year Actual storage temperature shall be subject to the COA.



Biological Description

Description	Antalarmin hydrochloride is an antagonist of corticotropin-releasing factor 1 (CRF1). Antalarmin hydrochloride produces anti-inflammatory effects and suppresses stress-induced gastric ulceration related to irritable bowel syndrome.
Targets(IC50)	CRFR, Immunology/Inflammation related

Solubility Information

Solubility	DMSO: 83.3 mg/mL (200.71 mM), Sonication is recommended. (< 1 mg/ml refers to the product slightly soluble or insoluble)
In vivo Formulation	10% DMSO+40% PEG300+5% Tween 80+45% Saline: 2 mg/mL (4.82 mM), Sonication is recommended. <i>Please add the solvents sequentially, clarifying the solution as much as possible before adding the next one. Dissolve by heating and/or sonication if necessary. Working solution is recommended to be prepared and used immediately. The formulation provided above is for reference purposes only. In vivo formulations may vary and should be modified based on specific experimental conditions.</i>

Preparing Stock Solutions

	1mg	5mg	10mg
1 mM	2.4095 mL	12.0476 mL	24.0952 mL
5 mM	0.4819 mL	2.4095 mL	4.819 mL
10 mM	0.241 mL	1.2048 mL	2.4095 mL
50 mM	0.0482 mL	0.241 mL	0.4819 mL

Please select the appropriate solvent to prepare the stock solution, according to the solubility of the product in different solvents. Please use it as soon as possible.

Note: The dilution table applies only to solid products. For liquid products, please calculate the stock solution based on the stated concentration and/or density.

Reference

Zorrilla EP, et al. Effects of antalarmin, a CRF type 1 receptor antagonist, on anxiety-like behavior and motor activation in the rat. *Brain Res.* 2002 Oct 18;952(2):188-99.

Deak T, et al. The impact of the nonpeptide corticotropin-releasing hormone antagonist antalarmin on behavioral and endocrine responses to stress. *Endocrinology.* 1999 Jan;140(1):79-86.

Webster EL, et al. In vivo and in vitro characterization of antalarmin, a nonpeptide corticotropin-releasing hormone (CRH) receptor antagonist: suppression of pituitary ACTH release and peripheral inflammation. *Endocrinology.* 1996 Dec;137(12):5747-50.

Inhibitor · Natural Compounds · Compound Libraries · Recombinant Proteins

This product is for Research Use Only · Not for Human or Veterinary or Therapeutic Use

Tel:781-999-4286 E_mail:info@targetmol.com Address:34 Washington Street,Wellesley Hills,MA 02481