

ML352

Chemical Properties

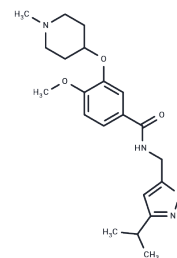
CAS No. : 1649450-12-3

Formula: C₂₁H₂₉N₃O₄

Molecular Weight: 387.47

Storage: Pure form: -20°C for 3 years | In solvent: -80°C for 1 year

Actual storage temperature shall be subject to the COA.



Biological Description

Description	ML352 is a selective and potent inhibitor of the presynaptic choline transporter (CHT), inhibits non-competitive choline uptake.
Targets(IC ₅₀)	Cholinesterase (ChE)

Solubility Information

Solubility	DMSO: 150 mg/mL (387.13 mM), Sonication is recommended. (< 1 mg/ml refers to the product slightly soluble or insoluble)
------------	--

Preparing Stock Solutions

	1mg	5mg	10mg
1 mM	2.5808 mL	12.9042 mL	25.8084 mL
5 mM	0.5162 mL	2.5808 mL	5.1617 mL
10 mM	0.2581 mL	1.2904 mL	2.5808 mL
50 mM	0.0516 mL	0.2581 mL	0.5162 mL

Please select the appropriate solvent to prepare the stock solution, according to the solubility of the product in different solvents. Please use it as soon as possible.

Note: The dilution table applies only to solid products. For liquid products, please calculate the stock solution based on the stated concentration and/or density.

Reference

Ennis EA, Wright J, Retzlaff CL, McManus OB, Lin Z, Huang X, et al. Identification and characterization of ML352: a novel, noncompetitive inhibitor of the presynaptic choline transporter. ACS Chem Neurosci. 2015 Mar 18;6(3):417-27.

Inhibitor · Natural Compounds · Compound Libraries · Recombinant Proteins

This product is for Research Use Only · Not for Human or Veterinary or Therapeutic Use

Tel:781-999-4286 E_mail:info@targetmol.com Address:34 Washington Street,Wellesley Hills,MA 02481