

HPV16 E7 (86-93) acetate

Chemical Properties

CAS No. :

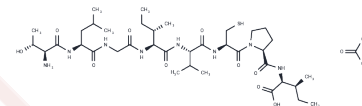
Formula: C39H70N8O12S

Molecular Weight: 875.08

Keep away from moisture

Storage: Powder: -20°C for 3 years | In solvent: -80°C for 1 year

Actual storage temperature shall be subject to the COA.



Biological Description

Description	HPV16 E7 (86-93) acetate is a derived peptide of human leukocyte antigen A2.1 restricted HPV16 E7 with immunogenic property in cervical carcinomas.
Targets(IC50)	Others
In vitro	HPV16 E7 peptide-loaded autologous dendritic cells stimulate a specific cytotoxic CD8+ T-cell response[1]. HPV16 E7 (86-93) acetate specific T cells expand upon in vitro stimulation with cognate peptide-pulsed dendritic cells. HPV16 E7 (86-93) acetate specific T cells are reactive against peptide-pulsed targets. HPV16 E7 (86-93) acetate specific E711-20 T cells are reactive against HPV16 E7 expressing CaSki cell line. Precursor T cells specific for HPV16 E7 (86-93) acetate differentiates into HPV specific effector cells in vitro[2].
In vivo	HPV16 E7 (86-93) acetate in IVS culture has specific T cell expansion without recognizing naturally HPV16 E7 expressing cell line CaSki. HPV16 E7 (86-93) acetate has similar observations in transgenic mice. HPV16 E7 (86-93) acetate induces cytotoxic T lymphocyte responses when loaded on the antigen presenting HLA class I molecules[2].

Preparing Stock Solutions

	1mg	5mg	10mg
1 mM	1.1428 mL	5.7138 mL	11.4275 mL
5 mM	0.2286 mL	1.1428 mL	2.2855 mL
10 mM	0.1143 mL	0.5714 mL	1.1428 mL
50 mM	0.0229 mL	0.1143 mL	0.2286 mL

Please select the appropriate solvent to prepare the stock solution, according to the solubility of the product in different solvents. Please use it as soon as possible.

Note: The dilution table applies only to solid products. For liquid products, please calculate the stock solution based on the stated concentration and/or density.

Reference

Hoffmann TK, et al. T cells specific for HPV16 E7 epitopes in patients with squamous cell carcinoma of the oropharynx. *Int J Cancer*. 2006 Apr 15;118(8):1984-91.

Cheng WF, et al. Induction of human papillomavirus type 16-specific immunologic responses in a normal and an human papillomavirus-infected populations. *Immunology*. 2005 May;115(1):136-49.

Inhibitor · Natural Compounds · Compound Libraries · Recombinant Proteins

This product is for Research Use Only · Not for Human or Veterinary or Therapeutic Use

Tel:781-999-4286 E_mail:info@targetmol.com Address:34 Washington Street,Wellesley Hills,MA 02481