

RmlA-IN-1

Chemical Properties

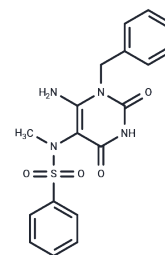
CAS No. : 1415030-78-2

Formula: C₁₈H₁₈N₄O₄S

Molecular Weight: 386.42

Storage: Powder: -20°C for 3 years | In solvent: -80°C for 1 year

Actual storage temperature shall be subject to the COA.



Biological Description

Description	RmlA-IN-1 (Compound 8a) is a highly potent inhibitor of glucose-1-phosphate thymidyltransferase (RmlA) with an IC ₅₀ value of 0.073 μM, modulating the biosynthesis of monosaccharide L-Rhamnose and impacting the permeability of the bacterial cell wall [1].
Targets(IC ₅₀)	Others,Antibacterial

Preparing Stock Solutions

	1mg	5mg	10mg
1 mM	2.5879 mL	12.9393 mL	25.8786 mL
5 mM	0.5176 mL	2.5879 mL	5.1757 mL
10 mM	0.2588 mL	1.2939 mL	2.5879 mL
50 mM	0.0518 mL	0.2588 mL	0.5176 mL

Please select the appropriate solvent to prepare the stock solution, according to the solubility of the product in different solvents. Please use it as soon as possible.

Note: The dilution table applies only to solid products. For liquid products, please calculate the stock solution based on the stated concentration and/or density.

Inhibitor · Natural Compounds · Compound Libraries · Recombinant Proteins

This product is for Research Use Only · Not for Human or Veterinary or Therapeutic Use

Tel:781-999-4286

E_mail:info@targetmol.com

Address:34 Washington Street,Wellesley Hills,MA 02481