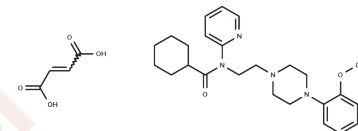


## WAY-100635 maleate

## Chemical Properties

CAS No. :	634908-75-1
Formula:	C <sub>25</sub> H <sub>34</sub> N <sub>4</sub> O <sub>2</sub> .x C <sub>4</sub> H <sub>4</sub> O <sub>4</sub>
Molecular Weight:	538.645
Storage:	Powder: -20°C for 3 years   In solvent: -80°C for 1 year Actual storage temperature shall be subject to the COA.



## Biological Description

Description	WAY-100635 Maleate is a specific and effective 5-HT receptor antagonist (IC <sub>50</sub> =0.95 nM).
Targets(IC <sub>50</sub> )	5-HT Receptor, Dopamine Receptor
Kinase Assay	Enzyme activity assay: To determine the IC <sub>50</sub> values of HM781-36B for kinase inhibition, enzymes of EGFR, HER2, and HER4 are expressed as recombinant proteins in Sf9 insect cells. Enzyme selectivity screening is then performed using a tyrosine kinase assay kit. Briefly, the reactions are performed in 96 well polystyrene round-bottomed plates containing kinase buffer composed of 100 mM HEPES (pH 7.4), 25 mM MgCl <sub>2</sub> , 10 mM MnCl <sub>2</sub> and 250 μM Na <sub>3</sub> VO <sub>4</sub> . The reactions are initiated by the addition of 100 ng/assay enzyme, 100 μM ATP, and 10 ng/mL poly(Glu, Tyr). After 1 h of incubation at room temperature, the reactions are terminated by adding 6 mM EDTA solution and then anti-phosphotyrosine antibody, PTK Green Tracer, and FP dilution buffer mixtures. The fluorescence polarization values are then measured after 30 min at room temperature using a Victor3 microplate reader. Finally, the IC <sub>50</sub> values were calculated using the following equation: $Y = \text{bottom} + (\text{top} - \text{bottom}) / (1 + 10(X - \log IC_{50}))$ .
Cell Research	Extracellular recordings are made with glass microelectrodes filled with 2 M NaCl (12 MΩ-15 MΩ). Cells are identified as 5-HT neurons according to the following criteria: biphasic action potentials of 2 msec to 3 msec in duration, slow (0.5 Hz - 2.0 Hz) and regular pattern of discharge. Firing is evoked in the otherwise silent neurons by adding the alpha-l adrenergic agonist phenylephrine (3 μM) to the superfusing ACSF. Baseline activity is recorded for at least 10 minutes before application of the different drugs. The electric signals are fed into a high-input impedance amplifier, an oscilloscope and an electronic ratemeter triggered by individual action potentials connected to an A/D converter and a personal computer. Using dedicated software, the integrated firing rate is recorded, computed and displayed on a chart recorder as consecutive 10-sec samples. The effects of agonists are evaluated by comparing the mean discharge frequency recorded during the 2 minutes that preceded WAY 100635 application with that recorded at the peak of WAY 100635 action (usually 2-5 minutes after the beginning of application). When the agonists are applied in the presence of the antagonist, the effect of the agonist is compared to baseline firing rate and to the frequency recorded during superfusion of the antagonist alone. The antagonist is left to equilibrate for 10 minutes to 25 minutes before retesting of the action of agonists. (Only for Reference)

## Solubility Information

Solubility	Ethanol: 79.00 mg/mL (146.66 mM),Sonication is recommended. DMSO: 117.5 mg/mL (218.14 mM),Sonication is recommended. (< 1 mg/ml refers to the product slightly soluble or insoluble)
------------	--

## Preparing Stock Solutions

	1mg	5mg	10mg
1 mM	1.8565 mL	9.2825 mL	18.5649 mL
5 mM	0.3713 mL	1.8565 mL	3.713 mL
10 mM	0.1856 mL	0.9282 mL	1.8565 mL
50 mM	0.0371 mL	0.1856 mL	0.3713 mL

Please select the appropriate solvent to prepare the stock solution, according to the solubility of the product in different solvents. Please use it as soon as possible.

Note: The dilution table applies only to solid products. For liquid products, please calculate the stock solution based on the stated concentration and/or density.

## Reference

Corradetti R, et al. J Pharmacol Exp Ther. 1996, 278(2), 679-688.

**Inhibitor · Natural Compounds · Compound Libraries · Recombinant Proteins**

This product is for Research Use Only · Not for Human or Veterinary or Therapeutic Use

Tel:781-999-4286 E\_mail:info@targetmol.com Address:34 Washington Street,Wellesley Hills,MA 02481