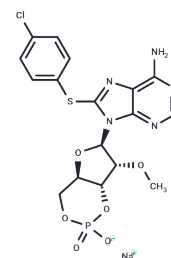


## 8-CPT-2Me-cAMP, sodium salt

## Chemical Properties

CAS No. :	634207-53-7
Formula:	C17H16ClN5NaO6PS
Molecular Weight:	507.82
Storage:	Powder: -20°C for 3 years   In solvent: -80°C for 1 year Actual storage temperature shall be subject to the COA.



## Biological Description

Description	8-CPT-2Me-cAMP sodium is a sodium salt compound that selectively activates exchange proteins activated by cAMP (Epac), which are cAMP-sensitive guanine nucleotide exchange factors (GEFs) responsible for activating small GTPases Rap1 and Rap2. It specifically activates Epac1 with an EC50 value of 2.2 $\mu$ M, while showing no activation of PKA with an EC50 value greater than 10 $\mu$ M [1]. Additionally, 8-CPT-2Me-cAMP sodium stimulates the Epac-mediated release of calcium ions (Ca <sup>2+</sup> ) in vitro in pancreatic $\beta$ -cells [2].
Targets(IC50)	Others,Ras

## Preparing Stock Solutions

	1mg	5mg	10mg
1 mM	1.9692 mL	9.846 mL	19.692 mL
5 mM	0.3938 mL	1.9692 mL	3.9384 mL
10 mM	0.1969 mL	0.9846 mL	1.9692 mL
50 mM	0.0394 mL	0.1969 mL	0.3938 mL

Please select the appropriate solvent to prepare the stock solution, according to the solubility of the product in different solvents. Please use it as soon as possible.

Note: The dilution table applies only to solid products. For liquid products, please calculate the stock solution based on the stated concentration and/or density.

Inhibitor · Natural Compounds · Compound Libraries · Recombinant Proteins

This product is for Research Use Only · Not for Human or Veterinary or Therapeutic Use

Tel:781-999-4286 E\_mail:info@targetmol.com Address:34 Washington Street,Wellesley Hills,MA 02481