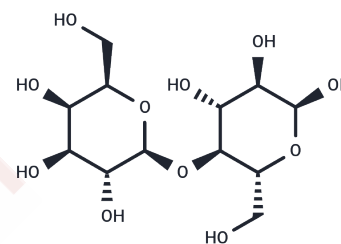


α -Lactose

Chemical Properties

CAS No. :	14641-93-1
Formula:	C ₁₂ H ₂₂ O ₁₁
Molecular Weight:	342.3
Storage:	Powder: -20°C for 3 years In solvent: -80°C for 1 year Actual storage temperature shall be subject to the COA.



Biological Description

Description	α -Lactose is the major sugar present in milk and the main source of energy supplied to the newborn mammalian in its mother's milk. Lactose is also an important osmotic regulator of lactation.
Targets(IC50)	Others

Solubility Information

Solubility	DMSO: 25 mg/mL (73.04 mM), Sonication is recommended. (< 1 mg/ml refers to the product slightly soluble or insoluble)
------------	--

Preparing Stock Solutions

	1mg	5mg	10mg
1 mM	2.9214 mL	14.6071 mL	29.2141 mL
5 mM	0.5843 mL	2.9214 mL	5.8428 mL
10 mM	0.2921 mL	1.4607 mL	2.9214 mL
50 mM	0.0584 mL	0.2921 mL	0.5843 mL

Please select the appropriate solvent to prepare the stock solution, according to the solubility of the product in different solvents. Please use it as soon as possible.

Note: The dilution table applies only to solid products. For liquid products, please calculate the stock solution based on the stated concentration and/or density.

Reference

Levitt M , Wilt T , Shaukat A . Clinical Implications of Lactose Malabsorption Versus Lactose Intolerance[J]. Journal of Clinical Gastroenterology, 2013, 47(6):471-480.

Inhibitor · Natural Compounds · Compound Libraries · Recombinant Proteins

This product is for Research Use Only · Not for Human or Veterinary or Therapeutic Use

Tel:781-999-4286 E_mail:info@targetmol.com Address:34 Washington Street,Wellesley Hills,MA 02481