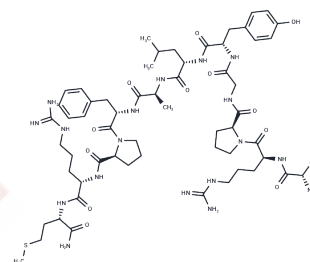


Small cardioactive peptide A

Chemical Properties

CAS No. :	98035-79-1
Formula:	C59H92N18O12S
Molecular Weight:	1277.54
Storage:	Keep away from moisture Powder: -20°C for 3 years In solvent: -80°C for 1 year <small>Actual storage temperature shall be subject to the COA.</small>



Biological Description

Description	Small cardioactive peptide A, as a neuropeptide that modulates neuromuscular synapsis in Aplysia, can also function as a neural cotransmitter in molluscs and exert a role in both the central and peripheral modulation of the control of feeding behavior.
-------------	--

Preparing Stock Solutions

	1mg	5mg	10mg
1 mM	0.7828 mL	3.9138 mL	7.8275 mL
5 mM	0.1566 mL	0.7828 mL	1.5655 mL
10 mM	0.0783 mL	0.3914 mL	0.7828 mL
50 mM	0.0157 mL	0.0783 mL	0.1566 mL

Please select the appropriate solvent to prepare the stock solution, according to the solubility of the product in different solvents. Please use it as soon as possible.

Note: The dilution table applies only to solid products. For liquid products, please calculate the stock solution based on the stated concentration and/or density.

Reference

- Lloyd PE, Kupfermann I, Weiss KR. Sequence of small cardioactive peptide A: a second member of a class of neuropeptides in Aplysia. *Peptides*. 1987 Jan-Feb;8(1):179-84. PubMed PMID: 3575150.
- Mahon AC, Lloyd PE, Weiss KR, Kupfermann I, Scheller RH. The small cardioactive peptides A and B of Aplysia are derived from a common precursor molecule. *Proc Natl Acad Sci U S A*. 1985 Jun;82(11):3925-9. PubMed PMID: 3858852; PubMed Central PMCID: PMC397902.
- Cropper EC, Miller MW, Tenenbaum R, Kolks MA, Kupfermann I, Weiss KR. Structure and action of buccalin: a modulatory neuropeptide localized to an identified small cardioactive peptide-containing cholinergic motor neuron of Aplysia californica. *Proc Natl Acad Sci U S A*. 1988 Aug;85(16):6177-81. PubMed PMID: 3413086; PubMed Central PMCID: PMC281928.
- Adamson KJ, Wang T, Rotgans BA, Kuballa AV, Storey KB, Cummins SF. Differential peptide expression in the central nervous system of the land snail *Theba pisana*, between active and aestivated. *Peptides*. 2016 Jun;80:61-71. doi: 10.1016/j.peptides.2015.08.012. Epub 2015 Aug 21. PubMed PMID: 26303007.

Inhibitor · Natural Compounds · Compound Libraries · Recombinant Proteins

This product is for Research Use Only · Not for Human or Veterinary or Therapeutic Use

Tel:781-999-4286 E_mail:info@targetmol.com Address:34 Washington Street,Wellesley Hills,MA 02481