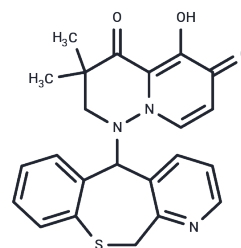


## Cap-dependent endonuclease-IN-6

## Chemical Properties

CAS No. :	2489248-15-7
Formula:	C <sub>23</sub> H <sub>21</sub> N <sub>3</sub> O <sub>3</sub> S
Molecular Weight:	419.5
Storage:	Powder: -20°C for 3 years   In solvent: -80°C for 1 year Actual storage temperature shall be subject to the COA.



## Biological Description

Description	Cap-dependent endonuclease-IN-6 (compound 13) is a Cap-dependent endonuclease (CEN) inhibitor that targets and inhibits the influenza virus.
Targets(IC50)	Others, Influenza Virus

## Preparing Stock Solutions

	1mg	5mg	10mg
1 mM	2.3838 mL	11.919 mL	23.8379 mL
5 mM	0.4768 mL	2.3838 mL	4.7676 mL
10 mM	0.2384 mL	1.1919 mL	2.3838 mL
50 mM	0.0477 mL	0.2384 mL	0.4768 mL

Please select the appropriate solvent to prepare the stock solution, according to the solubility of the product in different solvents. Please use it as soon as possible.

Note: The dilution table applies only to solid products. For liquid products, please calculate the stock solution based on the stated concentration and/or density.

Inhibitor · Natural Compounds · Compound Libraries · Recombinant Proteins

This product is for Research Use Only · Not for Human or Veterinary or Therapeutic Use

Tel: 781-999-4286 E\_mail: info@targetmol.com Address: 34 Washington Street, Wellesley Hills, MA 02481