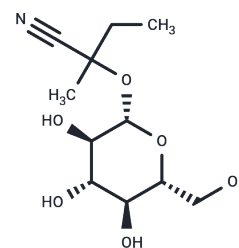


Iso-Lotaustralin

Chemical Properties

CAS No. :	1973415-50-7
Formula:	C ₁₁ H ₁₉ NO ₆
Molecular Weight:	261.27
Storage:	Keep away from direct sunlight, Keep away from moisture Powder: -20°C for 3 years In solvent: -80°C for 1 year <small>Actual storage temperature shall be subject to the COA.</small>



Biological Description

Description	Iso-Lotaustralin is the isomer of Lotaustralin. Lotaustralin is a cyanogenic glycoside found in foods such as pili nuts, corn salad, carrots, acorns, and carobs, with potential as a dietary biomarker, and Iso-Lotaustralin belongs to the class of glycosides whose aglycone contains a cyanide group, making it significant for nutritional and toxicological studies.
Targets(IC50)	Others

Solubility Information

Solubility	H ₂ O: 2.4 mg/mL (9.19 mM), Sonication and heating are recommended. (< 1 mg/ml refers to the product slightly soluble or insoluble)
------------	---

Preparing Stock Solutions

	1mg	5mg	10mg
1 mM	3.8275 mL	19.1373 mL	38.2746 mL
5 mM	0.7655 mL	3.8275 mL	7.6549 mL
10 mM	0.3827 mL	1.9137 mL	3.8275 mL
50 mM	0.0765 mL	0.3827 mL	0.7655 mL

Please select the appropriate solvent to prepare the stock solution, according to the solubility of the product in different solvents. Please use it as soon as possible.

Note: The dilution table applies only to solid products. For liquid products, please calculate the stock solution based on the stated concentration and/or density.

Reference

Optimization of process parameters of extraction of lotaustralin from the roots of *Rhodiola rosea* L using supercritical CO₂ plus modifier. *Toxicological & Environmental Chemistry Reviews*, 2016, 98(7):727-735.

Inhibitor · Natural Compounds · Compound Libraries · Recombinant Proteins

This product is for Research Use Only · Not for Human or Veterinary or Therapeutic Use

Tel:781-999-4286 E_mail:info@targetmol.com Address:34 Washington Street,Wellesley Hills,MA 02481