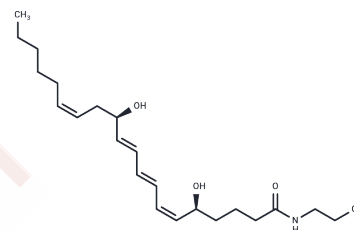


Leukotriene B4 Ethanolamide

Chemical Properties

CAS No. : 877459-63-7
 Formula: C₂₂H₃₇NO₄
 Molecular Weight: 379.541
 Storage: Powder: -20°C for 3 years | In solvent: -80°C for 1 year
Actual storage temperature shall be subject to the COA.



Biological Description

Description	The effects of Leukotriene B4 (LTB ₄) are mediated by two known receptors, BLT1 and BLT2. LTB ₄ is a high affinity ligand for BLT1, and many of its pro-inflammatory effects are believed to be transduced through this receptor. The BLT2 is more enigmatic, in that LTB ₄ is not a high-affinity ligand, nor is it clear that BLT2 activation promotes inflammation. LTB ₄ ethanolamide (LTB ₄ -EA) is a theoretical 5-LO metabolite of arachidonoyl ethanolamide (AEA). In CHO cells transfected with human BLTR1, LTB ₄ -EA was a potent antagonist with about three times greater affinity for the receptor than LTB ₄ (K _i = 1.22 nM versus 3.88 nM). LTB ₄ -EA antagonizes the LTB ₄ -induced contractions of guinea pig lung parenchyma with an EC ₅₀ of 10 nM. LTB ₄ -EA thus represents a potential endogenous anti-inflammatory compound functioning as a natural antagonist of BLTR1.
Targets(IC50)	Others,Endogenous Metabolite,Leukotriene Receptor

Solubility Information

Solubility	DMF: 100 mg/mL (263.48 mM),Sonication is recommended. PBS (pH 7.2): 12 mg/mL (31.62 mM),Sonication is recommended. DMSO: 100 mg/mL (263.48 mM),Sonication is recommended. Ethanol: 100 mg/mL (263.48 mM),Sonication is recommended. (< 1 mg/ml refers to the product slightly soluble or insoluble)
------------	---

Preparing Stock Solutions

	1mg	5mg	10mg
1 mM	2.6348 mL	13.1738 mL	26.3477 mL
5 mM	0.527 mL	2.6348 mL	5.2695 mL
10 mM	0.2635 mL	1.3174 mL	2.6348 mL
50 mM	0.0527 mL	0.2635 mL	0.527 mL

Please select the appropriate solvent to prepare the stock solution, according to the solubility of the product in different solvents. Please use it as soon as possible.

Note: The dilution table applies only to solid products. For liquid products, please calculate the stock solution based on the stated concentration and/or density.

Inhibitor · Natural Compounds · Compound Libraries · Recombinant Proteins

This product is for Research Use Only · Not for Human or Veterinary or Therapeutic Use

Tel:781-999-4286 E_mail:info@targetmol.com Address:34 Washington Street,Wellesley Hills,MA 02481