

KC01

## Chemical Properties

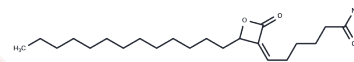
CAS No. : 1646795-59-6

Formula: C<sub>22</sub>H<sub>39</sub>NO<sub>3</sub>

Molecular Weight: 365.558

Storage: Powder: -20°C for 3 years | In solvent: -80°C for 1 year

Actual storage temperature shall be subject to the COA.



## Biological Description

Description	KC01 is an effective and selective inhibitor of ABHD16A. By measuring competitive gel-based ABPP (IC <sub>50</sub> values of inhibition of ABHD16A by KC01 and KC02: ~0.2–0.5 μM and >10 μM, respectively). Testing by a PS substrate assay, IC <sub>50</sub> values of inhibition of human ABHD16A by KC01 was 90 ±20 nM.
Targets(IC <sub>50</sub> )	Others, TNF
In vitro	KC01 can deplete lysoPSs from cells, including lymphoblasts derived from subjects with PHARC. It was shown that KC01, but not KC02, inhibited the PS lipase activity of brain membrane lysates from 2-month-old Abhd12+/+ and Abhd12?/? mice. K562 cell lines were treated with varying concentrations of KC01 for 4 h and analyzed the cell membrane fractions by gel-based ABPP, which confirmed in situ inhibition of ABHD16A (IC <sub>50</sub> : ~ 0.3 μM). In mouse macrophages, disruption of ABHD12 and ABHD16A increases and decreases both lyso-PSs and lipopolysaccharide-induced cytokine production. Knockout mice of Abhd16a?/? have decreased brain lyso-PSs, which runs counter to the elevation in lyso-PS.

## Solubility Information

Solubility	DMSO: Soluble, (< 1 mg/ml refers to the product slightly soluble or insoluble)
------------	---

### Preparing Stock Solutions

---

	<b>1mg</b>	<b>5mg</b>	<b>10mg</b>
1 mM	2.7355 mL	13.6776 mL	27.3553 mL
5 mM	0.5471 mL	2.7355 mL	5.4711 mL
10 mM	0.2736 mL	1.3678 mL	2.7355 mL
50 mM	0.0547 mL	0.2736 mL	0.5471 mL

---

Please select the appropriate solvent to prepare the stock solution, according to the solubility of the product in different solvents. Please use it as soon as possible.

Note: The dilution table applies only to solid products. For liquid products, please calculate the stock solution based on the stated concentration and/or density.

**Inhibitor · Natural Compounds · Compound Libraries · Recombinant Proteins**

This product is for Research Use Only · Not for Human or Veterinary or Therapeutic Use

Tel:781-999-4286 E\_mail:info@targetmol.com Address:34 Washington Street,Wellesley Hills,MA 02481