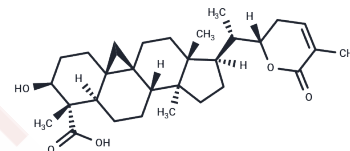


Abrusogenin

Chemical Properties

CAS No. :	124962-07-8
Formula:	C ₃₀ H ₄₄ O ₅
Molecular Weight:	484.677
Storage:	Powder: -20°C for 3 years In solvent: -80°C for 1 year Actual storage temperature shall be subject to the COA.



Biological Description

Description	Abrusogenin is a naturally occurring sweet saponin that may be cytotoxic.
Targets(IC50)	Others

Preparing Stock Solutions

	1mg	5mg	10mg
1 mM	2.0632 mL	10.3161 mL	20.6322 mL
5 mM	0.4126 mL	2.0632 mL	4.1264 mL
10 mM	0.2063 mL	1.0316 mL	2.0632 mL
50 mM	0.0413 mL	0.2063 mL	0.4126 mL

Please select the appropriate solvent to prepare the stock solution, according to the solubility of the product in different solvents. Please use it as soon as possible.

Note: The dilution table applies only to solid products. For liquid products, please calculate the stock solution based on the stated concentration and/or density.

Reference

- Kim NC, Kinghorn AD, Kim DS. Semisynthesis of abrusoside A methyl ester. *Org Lett.* 1999 Jul 29;1(2):223-4. PubMed PMID: 10905867.
- Xiao ZH, Wang FZ, Sun AJ, Li CR, Huang CG, Zhang S. A new triterpenoid saponin from *Abrus precatorius* Linn. *Molecules.* 2011 Dec 30;17(1):295-302. doi: 10.3390/molecules17010295. PubMed PMID: 22210168.
- Choi YH, Hussain RA, Pezzuto JM, Kinghorn AD, Morton JF. Abrusosides A-D, four novel sweet-tasting triterpene glycosides from the leaves of *Abrus precatorius*. *J Nat Prod.* 1989 Sep-Oct;52(5):1118-27. PubMed PMID: 2691636.
- Stavrianidi A, Stekolshchikova E, Rodin I, Godovikov I, Shpigun O. Structure elucidation of sweet-tasting cycloartane-type saponins from ginseng oolong tea and *Abrus precatorius* L. leaves. *Nat Prod Res.* 2017 Dec 18:1-4. doi: 10.1080/14786419.2017.1416383. [Epub ahead of print] PubMed PMID: 29251993.

Inhibitor · Natural Compounds · Compound Libraries · Recombinant Proteins

This product is for Research Use Only · Not for Human or Veterinary or Therapeutic Use

Tel:781-999-4286 E_mail:info@targetmol.com Address:34 Washington Street,Wellesley Hills,MA 02481