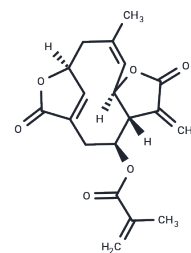


Isodeoxyelephantopin

Chemical Properties

CAS No. :	38927-54-7
Formula:	C ₁₉ H ₂₀ O ₆
Molecular Weight:	344.36
Storage:	Powder: -20°C for 3 years In solvent: -80°C for 1 year Actual storage temperature shall be subject to the COA.



Biological Description

Description	Isodeoxyelephantopin can inhibit the growth of various tumor cells.
Targets(IC50)	NF-κB, Reactive Oxygen Species, Autophagy, ROS
In vitro	Isodeoxyelephantopin inhibits the growth of A549 and T47D cells in a dose-dependent and time-dependent manner with IC50 values of 10.46 and 1.3 μg/mL, respectively. Heterodeoxyelephantin showed no significant toxicity to normal lymphocytes. Heterodeoxyelephantin-induced cell death is associated with activated caspase-3 expression, followed by cell cycle stagnation in G2/M phase [1]

Solubility Information

Solubility	DMSO: 55 mg/mL (159.72 mM), Sonication is recommended. (< 1 mg/ml refers to the product slightly soluble or insoluble)
------------	---

Preparing Stock Solutions

	1mg	5mg	10mg
1 mM	2.9039 mL	14.5197 mL	29.0394 mL
5 mM	0.5808 mL	2.9039 mL	5.8079 mL
10 mM	0.2904 mL	1.452 mL	2.9039 mL
50 mM	0.0581 mL	0.2904 mL	0.5808 mL

Please select the appropriate solvent to prepare the stock solution, according to the solubility of the product in different solvents. Please use it as soon as possible.

Note: The dilution table applies only to solid products. For liquid products, please calculate the stock solution based on the stated concentration and/or density.

Reference

Isodeoxyelephantopin from *Elephantopus scaber* (Didancao) induces cell cycle arrest and caspase-3-mediated apoptosis in breast carcinoma T47D cells and lung carcinoma A549 cells. *Chin Med*. 2014 Apr 17;9:14.

Inhibitor · Natural Compounds · Compound Libraries · Recombinant Proteins

This product is for Research Use Only · Not for Human or Veterinary or Therapeutic Use

Tel: 781-999-4286 E_mail: info@targetmol.com Address: 34 Washington Street, Wellesley Hills, MA 02481