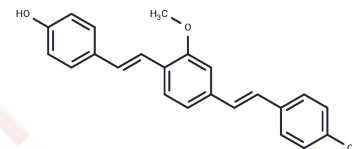


## Methoxy-X04

## Chemical Properties

CAS No. :	863918-78-9
Formula:	C <sub>23</sub> H <sub>20</sub> O <sub>3</sub>
Molecular Weight:	344.4
Storage:	Powder: -20°C for 3 years   In solvent: -80°C for 1 year Actual storage temperature shall be subject to the COA.



## Biological Description

Description	Methoxy-X04, a derivative of Congo red and Chrysamine-G, is a brain-permeable fluorescent probe for amyloid- $\beta$ (A $\beta$ ).
Targets(IC50)	Beta Amyloid,Others
In vitro	In in vitro binding studies, compared with Chrysamine-G (K <sub>i</sub> = 25.3 nM), Methoxy-X04 exhibited similar binding affinity for A $\beta$ fibrils (K <sub>i</sub> = 26.8 nM) [1]. On brain slices of 12-month-old APP-PS1 (dE9) mice, 145 $\mu$ M Methoxy-X04 was used for labeling fibrillary amyloid deposits [3].
In vivo	In PS1/APP mice, a single i.v. injection of 5 to 10 mg/kg Methoxy-X04 distinguished individual plaques from brain fluorescent images, within 30 to 60 min after treatment. A single i.p. injection of 10 mg/kg Methoxy-X04 also produced high contrast images of plaques and cerebrovascular amyloid in PS1/APP mouse brains [1].

## Solubility Information

Solubility	DMSO: 37.14 mg/mL (107.84 mM),Sonication is recommended. (< 1 mg/ml refers to the product slightly soluble or insoluble)
In vivo Formulation	10% DMSO+40% PEG300+5% Tween 80+45% Saline: 1 mg/mL (2.9 mM),Sonication is recommended. <i>Please add the solvents sequentially, clarifying the solution as much as possible before adding the next one. Dissolve by heating and/or sonication if necessary. Working solution is recommended to be prepared and used immediately. The formulation provided above is for reference purposes only. In vivo formulations may vary and should be modified based on specific experimental conditions.</i>

### Preparing Stock Solutions

---

	<b>1mg</b>	<b>5mg</b>	<b>10mg</b>
1 mM	2.9036 mL	14.518 mL	29.036 mL
5 mM	0.5807 mL	2.9036 mL	5.8072 mL
10 mM	0.2904 mL	1.4518 mL	2.9036 mL
50 mM	0.0581 mL	0.2904 mL	0.5807 mL

---

Please select the appropriate solvent to prepare the stock solution, according to the solubility of the product in different solvents. Please use it as soon as possible.

Note: The dilution table applies only to solid products. For liquid products, please calculate the stock solution based on the stated concentration and/or density.

**Inhibitor · Natural Compounds · Compound Libraries · Recombinant Proteins**

This product is for Research Use Only · Not for Human or Veterinary or Therapeutic Use

Tel:781-999-4286 E\_mail:info@targetmol.com Address:34 Washington Street,Wellesley Hills,MA 02481