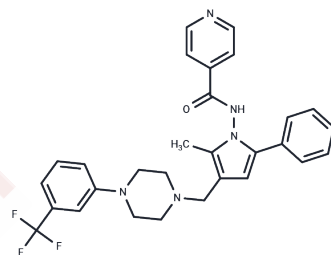


Sudoterb free base

Chemical Properties

| | |
|-------------------|---------------------------------------------------------------------------------------------------------------------|
| CAS No. : | 676266-31-2 |
| Formula: | C ₂₉ H ₂₈ F ₃ N ₅ O |
| Molecular Weight: | 519.56 |
| Storage: | Powder: -20°C for 3 years In solvent: -80°C for 1 year Actual storage temperature shall be subject to the COA. |



Biological Description

| | |
|---------------|---------------------------------------------------------------------------------------------|
| Description | Sudoterb free base (Sudoterb) , also known as LL3858, is an anti-tubercular drug candidate. |
| Targets(IC50) | ATPase,Antibacterial |

Solubility Information

| | |
|---------------------|-------------------------------------------------------------------------------------------------------------------------------------------------------------------------------------------------------------------------------------------------------------------------------------------------------------------------------------------------------------------------------------------------------------------------------------------------------------------------------------|
| Solubility | DMSO: 10 mM,Sonication is recommended. (< 1 mg/ml refers to the product slightly soluble or insoluble) |
| In vivo Formulation | 10% DMSO+90% Corn Oil: 1 mg/mL (1.92 mM),Sonication is recommended. <i>Please add the solvents sequentially, clarifying the solution as much as possible before adding the next one. Dissolve by heating and/or sonication if necessary. Working solution is recommended to be prepared and used immediately. The formulation provided above is for reference purposes only. In vivo formulations may vary and should be modified based on specific experimental conditions.</i> |

Preparing Stock Solutions

| | 1mg | 5mg | 10mg |
|-------|-----------|-----------|------------|
| 1 mM | 1.9247 mL | 9.6235 mL | 19.2471 mL |
| 5 mM | 0.3849 mL | 1.9247 mL | 3.8494 mL |
| 10 mM | 0.1925 mL | 0.9624 mL | 1.9247 mL |
| 50 mM | 0.0385 mL | 0.1925 mL | 0.3849 mL |

Please select the appropriate solvent to prepare the stock solution, according to the solubility of the product in different solvents. Please use it as soon as possible.

Note: The dilution table applies only to solid products. For liquid products, please calculate the stock solution based on the stated concentration and/or density.

Reference

Didilescu C, Craiova UM. [Present and future in the use of anti-tubercular drugs]. Pneumologia. 2011 Oct-Dec;60 (4):198-201.

Respirology. 2010 Jul;15(5):764-78. doi: 10.1111/j.1440-1843.2010.201775.x. Epub 2010 Jun 4.

LL-3858. Tuberculosis (Edinb). 2008 Mar;88(2):126.

Inhibitor · Natural Compounds · Compound Libraries · Recombinant Proteins

This product is for Research Use Only · Not for Human or Veterinary or Therapeutic Use

Tel:781-999-4286 E_mail:info@targetmol.com Address:34 Washington Street,Wellesley Hills,MA 02481