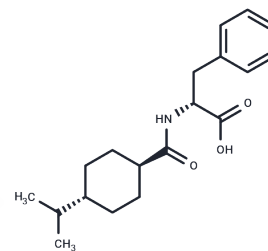


Nateglinide

Chemical Properties

CAS No. :	105816-04-4
Formula:	C ₁₉ H ₂₇ N ₃ O ₃
Molecular Weight:	317.42
Storage:	Powder: -20°C for 3 years In solvent: -80°C for 1 year Actual storage temperature shall be subject to the COA.



Biological Description

Description	Nateglinide (Senaglinide) is an oral hypoglycemic agent and amino acid derivative that stimulates insulin secretion from the pancreas and is used in the therapy of type 2 diabetes. Nateglinide has been linked to rare instances of clinically apparent acute liver injury.
Targets(IC50)	Proteasome,Potassium Channel,PPAR

Solubility Information

Solubility	DMSO: 250 mg/mL (787.6 mM),Sonication is recommended. (< 1 mg/ml refers to the product slightly soluble or insoluble)
In vivo Formulation	10% DMSO+40% PEG300+5% Tween 80+45% Saline: 2 mg/mL (6.3 mM),Sonication is recommended. <i>Please add the solvents sequentially, clarifying the solution as much as possible before adding the next one. Dissolve by heating and/or sonication if necessary. Working solution is recommended to be prepared and used immediately. The formulation provided above is for reference purposes only. In vivo formulations may vary and should be modified based on specific experimental conditions.</i>

Preparing Stock Solutions

	1mg	5mg	10mg
1 mM	3.1504 mL	15.752 mL	31.504 mL
5 mM	0.6301 mL	3.1504 mL	6.3008 mL
10 mM	0.315 mL	1.5752 mL	3.1504 mL
50 mM	0.063 mL	0.315 mL	0.6301 mL

Please select the appropriate solvent to prepare the stock solution, according to the solubility of the product in different solvents. Please use it as soon as possible.

Note: The dilution table applies only to solid products. For liquid products, please calculate the stock solution based on the stated concentration and/or density.

Reference

Hu S, et al. J Pharmacol Exp Ther. 2000 May;293(2):444-52.

Inhibitor · Natural Compounds · Compound Libraries · Recombinant Proteins

This product is for Research Use Only · Not for Human or Veterinary or Therapeutic Use

Tel:781-999-4286 E_mail:info@targetmol.com Address:34 Washington Street,Wellesley Hills,MA 02481