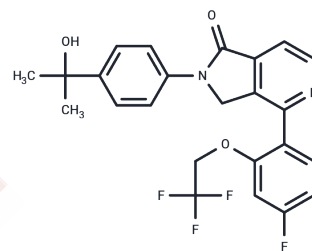


## Glucosylceramide synthase-IN-1

## Chemical Properties

CAS No. :	2601393-20-6
Formula:	C <sub>24</sub> H <sub>20</sub> F <sub>4</sub> N <sub>2</sub> O <sub>3</sub>
Molecular Weight:	460.42
Storage:	Powder: -20°C for 3 years   In solvent: -80°C for 1 year Actual storage temperature shall be subject to the COA.



## Biological Description

Description	Glucosylceramide synthase-IN-1 (T-036) is a potent, orally active, blood-brain barrier permeable glucosylceramide synthase (GCS) inhibitor, acting on human GCS (IC <sub>50</sub> : 31 nM) and mouse GCS (IC <sub>50</sub> : 51 nM), and can be used to study Gaucher disease.
Targets(IC <sub>50</sub> )	Others,Transferase

## Preparing Stock Solutions

	1mg	5mg	10mg
1 mM	2.1719 mL	10.8596 mL	21.7193 mL
5 mM	0.4344 mL	2.1719 mL	4.3439 mL
10 mM	0.2172 mL	1.086 mL	2.1719 mL
50 mM	0.0434 mL	0.2172 mL	0.4344 mL

Please select the appropriate solvent to prepare the stock solution, according to the solubility of the product in different solvents. Please use it as soon as possible.

Note: The dilution table applies only to solid products. For liquid products, please calculate the stock solution based on the stated concentration and/or density.

Inhibitor · Natural Compounds · Compound Libraries · Recombinant Proteins

This product is for Research Use Only · Not for Human or Veterinary or Therapeutic Use

Tel:781-999-4286 E\_mail:info@targetmol.com Address:34 Washington Street,Wellesley Hills,MA 02481