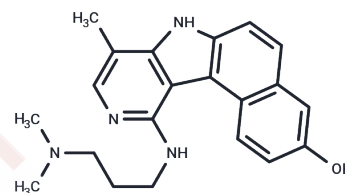


Intopicine

Chemical Properties

CAS No. :	125974-72-3
Formula:	C ₂₁ H ₂₄ N ₄ O
Molecular Weight:	348.44
Storage:	Powder: -20°C for 3 years In solvent: -80°C for 1 year Actual storage temperature shall be subject to the COA.



Biological Description

Description	Intopicine is an inhibitor of DNA topoisomerase I and II.
Targets(IC50)	Topoisomerase
In vitro	Intopicine is the most active analogue evaluated in the 7H-benzo[e]-pyrido-[4,3-b]-indole series of antineoplastic compounds. Activity of Intopicine against human tumor colony-forming units in vitro. Intopicine shows its activity through inhibition of DNA topoisomerase I and II[1]. Intopicine is found to unwind DNA and to inhibit purified calf thymus topoisomerase II via stabilization of the ternary cleavable complex[2].

Preparing Stock Solutions

	1mg	5mg	10mg
1 mM	2.8699 mL	14.3497 mL	28.6993 mL
5 mM	0.574 mL	2.8699 mL	5.7399 mL
10 mM	0.287 mL	1.435 mL	2.8699 mL
50 mM	0.0574 mL	0.287 mL	0.574 mL

Please select the appropriate solvent to prepare the stock solution, according to the solubility of the product in different solvents. Please use it as soon as possible.

Note: The dilution table applies only to solid products. For liquid products, please calculate the stock solution based on the stated concentration and/or density.

Reference

- Eckardt JR, et al. Activity of Intopicine (RP60475), a new DNA topoisomerase I and II inhibitor, against human tumor colony-forming units in vitro. *J Natl Cancer Inst.* 1994 Jan 5;86(1):30-3.
- Morjani H, et al. Molecular and cellular interactions between Intopicine, DNA, and topoisomerase II studied by surface-enhanced Raman scattering spectroscopy. *Cancer Res.* 1993 Oct 15;53(20):4784-90.

Inhibitor · Natural Compounds · Compound Libraries · Recombinant Proteins

This product is for Research Use Only · Not for Human or Veterinary or Therapeutic Use

Tel:781-999-4286 E_mail:info@targetmol.com Address:34 Washington Street,Wellesley Hills,MA 02481