

## DPDPE TFA (88373-73-3 free base)

### Chemical Properties

CAS No. : 172888-59-4

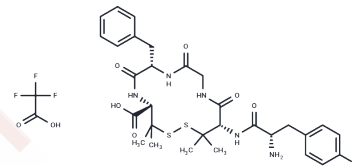
Formula: C32H40F3N5O9S2

Molecular Weight: 759.81

Keep away from moisture

Storage: Powder: -20°C for 3 years | In solvent: -80°C for 1 year

Actual storage temperature shall be subject to the COA.



### Biological Description

Description	DPDPE TFA is selective $\delta$ -opioid receptor agonist peptide. Inhibits electrically stimulated contraction of mouse vas deferens in vitro ( $EC_{50} = 5.2$ nM), and is antinociceptive in vivo.
Targets( $IC_{50}$ )	Opioid Receptor

### Solubility Information

Solubility	DMSO: 10 mM, Sonication is recommended. ( $< 1$ mg/ml refers to the product slightly soluble or insoluble)
------------	---

#### Preparing Stock Solutions

	1mg	5mg	10mg
1 mM	1.3161 mL	6.5806 mL	13.1612 mL
5 mM	0.2632 mL	1.3161 mL	2.6322 mL
10 mM	0.1316 mL	0.6581 mL	1.3161 mL
50 mM	0.0263 mL	0.1316 mL	0.2632 mL

Please select the appropriate solvent to prepare the stock solution, according to the solubility of the product in different solvents. Please use it as soon as possible.

Note: The dilution table applies only to solid products. For liquid products, please calculate the stock solution based on the stated concentration and/or density.

### Reference

Chandrakumar et al (1992) Analogs of the  $\delta$  opioid receptor selective cyclic peptide [2-D-penicillamine,5-D-penicillamine]-enkephalin: 2',6'-dimethyltyrosine and Gly3-Phe4 amide bond isostere substitutions. J.Med.Chem. 35 2928 PMID:

Clark et al (1986) [D-Pen2,D-Pen5]enkephalin (DPDPE): a  $\delta$ -selective enkephalin with low affinity for  $\mu$ 1 opiate binding sites. Eur.J.Pharmacol. 128 303 PMID:

Fraser et al (2000) Supraspinal antinociceptive response to [D-Pen2,5]-enkephalin (DPDPE) is pharmacologically distinct from that to other  $\delta$ -agonists in the rat. J.Pharmacol.Exp.Ther. 295 1135 PMID:

**Inhibitor · Natural Compounds · Compound Libraries · Recombinant Proteins**

This product is for Research Use Only· Not for Human or Veterinary or Therapeutic Use

Tel:781-999-4286 E\_mail:info@targetmol.com Address:34 Washington Street,Wellesley Hills,MA 02481