

WEHI-539

## Chemical Properties

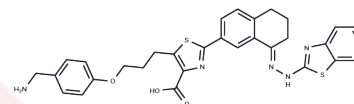
CAS No. : 1431866-33-9

Formula: C<sub>31</sub>H<sub>29</sub>N<sub>5</sub>O<sub>3</sub>S<sub>2</sub>

Molecular Weight: 583.72

Storage: Powder: -20°C for 3 years | In solvent: -80°C for 1 year

Actual storage temperature shall be subject to the COA.



## Biological Description

Description	WEHI-539 is a selective Bcl-XL inhibitor (IC <sub>50</sub> : 1.1 nM).
Targets(IC <sub>50</sub> )	Bcl-2 Family
In vitro	WEHI-539 induces noticeable PARP cleavage in Ovc4r-4 (5 μM in Ovc4r-4.) and Ovsaho (1 μM in Ovsaho) cells. WEHI-539 augments Carboplatin induced caspase 3/7 activity, PARP cleavage, and annexin V labeling.[2]

## Preparing Stock Solutions

	1mg	5mg	10mg
1 mM	1.7132 mL	8.5658 mL	17.1315 mL
5 mM	0.3426 mL	1.7132 mL	3.4263 mL
10 mM	0.1713 mL	0.8566 mL	1.7132 mL
50 mM	0.0343 mL	0.1713 mL	0.3426 mL

Please select the appropriate solvent to prepare the stock solution, according to the solubility of the product in different solvents. Please use it as soon as possible.

Note: The dilution table applies only to solid products. For liquid products, please calculate the stock solution based on the stated concentration and/or density.

### Reference

Lessene G, et al. Structure-guided design of a selective BCL-X(L) inhibitor. *Nat Chem Biol.* 2013 ; 9(6):390-397.

Abed MN, et al. Antagonism of Bcl-XL is necessary for synergy between carboplatin and BH3 mimetics in ovarian cancer cells. *J Ovarian Res.* 2016 ; 9:25.

Chiou JT, et al. BCL2 inhibitor ABT-199 and BCL2L1 inhibitor WEHI-539 coordinately promote NOXA-mediated degradation of MCL1 in human leukemia cells. *Chem Biol Interact.* 2022 ; 361:109978.

Abed MN, et al. Antagonism of Bcl-XL is necessary for synergy between carboplatin and BH3 mimetics in ovarian cancer cells. *J Ovarian Res.* 2016 ; 9:25.

Park HA, et al. Inhibition of Bcl-xL prevents pro-death actions of  $\Delta$ N-Bcl-xL at the mitochondrial inner membrane during glutamate excitotoxicity. *Cell Death Differ.* 2017 ; 24(11):1963-1974.

**Inhibitor · Natural Compounds · Compound Libraries · Recombinant Proteins**

This product is for Research Use Only · Not for Human or Veterinary or Therapeutic Use

Tel:781-999-4286 E\_mail:info@targetmol.com Address:34 Washington Street,Wellesley Hills,MA 02481