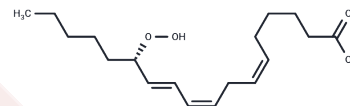


13(S)-HpOTrE(γ)

Chemical Properties

| | |
|-------------------|---|
| CAS No. : | 121107-97-9 |
| Formula: | C ₁₈ H ₃₀ O ₄ |
| Molecular Weight: | 310.43 |
| Storage: | Powder: -20°C for 3 years In solvent: -80°C for 1 year Actual storage temperature shall be subject to the COA. |



Biological Description

| | |
|---------------|---|
| Description | 13(S)-HpOTrE(γ) is a monohydroxy PUFA produced by the action of soybean lipoxygenase-1 (LO-1) on γ -linolenic acid. Further action of soybean LO-1 converts 13(S)-HpOTrE(γ) to all four isomers of 6,13-DiHOTrE. At concentrations greater than 100 μ M, 13(S)-HpOTrE(γ) inhibits the activity of soybean LO-1. |
| Targets(IC50) | Others,Lipoxygenase |

Solubility Information

| | |
|------------|--|
| Solubility | DMSO: >50 mg/mL (per Rao Maddipati),Sonication is recommended. PBS (pH 7.2): >1 mg/mL (from 13(S)-HODE),Sonication is recommended. DMF: >50 mg/mL (per Rao Maddipati),Sonication is recommended. Ethanol: >50 mg/mL (per Rao Maddipati),Sonication is recommended. (< 1 mg/ml refers to the product slightly soluble or insoluble) |
|------------|--|

Preparing Stock Solutions

| | 1mg | 5mg | 10mg |
|-------|-----------|------------|------------|
| 1 mM | 3.2213 mL | 16.1067 mL | 32.2134 mL |
| 5 mM | 0.6443 mL | 3.2213 mL | 6.4427 mL |
| 10 mM | 0.3221 mL | 1.6107 mL | 3.2213 mL |
| 50 mM | 0.0644 mL | 0.3221 mL | 0.6443 mL |

Please select the appropriate solvent to prepare the stock solution, according to the solubility of the product in different solvents. Please use it as soon as possible.

Note: The dilution table applies only to solid products. For liquid products, please calculate the stock solution based on the stated concentration and/or density.

Inhibitor · Natural Compounds · Compound Libraries · Recombinant Proteins

This product is for Research Use Only · Not for Human or Veterinary or Therapeutic Use

Tel:781-999-4286 E_mail:info@targetmol.com Address:34 Washington Street,Wellesley Hills,MA 02481