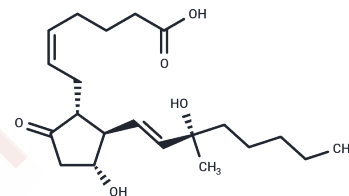


## 15(S)-15-methyl Prostaglandin E2

### Chemical Properties

CAS No. :	35700-27-7
Formula:	C <sub>21</sub> H <sub>34</sub> O <sub>5</sub>
Molecular Weight:	366.49
Storage:	Powder: -20°C for 3 years   In solvent: -80°C for 1 year <i>Actual storage temperature shall be subject to the COA.</i>



### Biological Description

Description	15(S)-15-methyl PGE2 is a potent, metabolically stable analog of PGE2. It is a potent gastric antisecretory and antiulcer compound. 15(S)-15-methyl PGE2 binds to human myometrium with twice the affinity of PGE2 and is ten times more potent than PGE1 in contracting uterine smooth muscle.
Targets(IC50)	Others, Prostaglandin Receptor

### Solubility Information

Solubility	PBS (pH 7.2): >5 mg/mL (from PGE2), Sonication is recommended. DMF: >100 mg/mL (from PGE2), Sonication is recommended. DMSO: >100 mg/mL (from PGE2), Sonication is recommended. Ethanol: >100 mg/mL (from PGE2), Sonication is recommended. (< 1 mg/ml refers to the product slightly soluble or insoluble)
------------	---

### Preparing Stock Solutions

	1mg	5mg	10mg
1 mM	2.7286 mL	13.6429 mL	27.2859 mL
5 mM	0.5457 mL	2.7286 mL	5.4572 mL
10 mM	0.2729 mL	1.3643 mL	2.7286 mL
50 mM	0.0546 mL	0.2729 mL	0.5457 mL

Please select the appropriate solvent to prepare the stock solution, according to the solubility of the product in different solvents. Please use it as soon as possible.

Note: The dilution table applies only to solid products. For liquid products, please calculate the stock solution based on the stated concentration and/or density.

**Inhibitor · Natural Compounds · Compound Libraries · Recombinant Proteins**

This product is for Research Use Only · Not for Human or Veterinary or Therapeutic Use

Tel:781-999-4286 E\_mail:info@targetmol.com Address:34 Washington Street,Wellesley Hills,MA 02481