

Sincalide

Chemical Properties

CAS No. : 25126-32-3

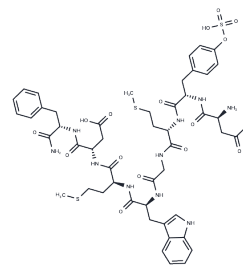
Formula: C49H62N10O16S3

Molecular Weight: 1143.27

Keep away from moisture, Keep away from direct sunlight, Store at low temperature

Storage: Pure form: -20°C for 3 years | In solvent: -80°C for 1 year

Actual storage temperature shall be subject to the COA.



Biological Description

Description	Sincalide (CCK-8) is a cholecystokinetic drug administered by injection to aid in diagnosing disorders of the gallbladder and pancreas. It is the 8-amino acid C-terminal fragment of cholecystokinin.
Targets(IC50)	Apoptosis, Others, Akt, Cholecystokinin Receptor, PI3K

Solubility Information

Solubility	H2O: < 0.1 mg/mL (insoluble), DMF: 50 mg/mL (43.73 mM), Sonication is recommended. (< 1 mg/ml refers to the product slightly soluble or insoluble)
------------	----------------------------------------------------------------------------------------------------------------------------------------------------------

Preparing Stock Solutions

	1mg	5mg	10mg
1 mM	0.8747 mL	4.3734 mL	8.7468 mL
5 mM	0.1749 mL	0.8747 mL	1.7494 mL
10 mM	0.0875 mL	0.4373 mL	0.8747 mL
50 mM	0.0175 mL	0.0875 mL	0.1749 mL

Please select the appropriate solvent to prepare the stock solution, according to the solubility of the product in different solvents. Please use it as soon as possible.

Note: The dilution table applies only to solid products. For liquid products, please calculate the stock solution based on the stated concentration and/or density.

Reference

Maher KA et al. Kinevac (sinalide for injection)/Squibb Diagnostics. Gastroenterol Nurs. 1991 Oct;14(2):98-100.
Zang Y, Tian Z, Wang D, et al. METTL3-mediated N6-methyladenosine modification of STAT5A promotes gastric cancer progression by regulating KLF4. Oncogene. 2024: 1-17.

Inhibitor · Natural Compounds · Compound Libraries · Recombinant Proteins

This product is for Research Use Only · Not for Human or Veterinary or Therapeutic Use

Tel: 781-999-4286 E_mail: info@targetmol.com Address: 34 Washington Street, Wellesley Hills, MA 02481