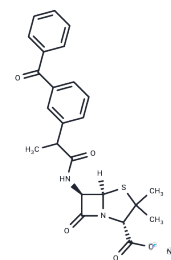


Ketocillin sodium

Chemical Properties

CAS No. :	196309-79-2
Formula:	C ₂₄ H ₂₃ N ₂ NaO ₅ S
Molecular Weight:	474.51
Storage:	Powder: -20°C for 3 years In solvent: -80°C for 1 year Actual storage temperature shall be subject to the COA.



Biological Description

Description	Ketocillin sodium is a semisynthetic penicillin.
Targets(IC50)	Others

Preparing Stock Solutions

	1mg	5mg	10mg
1 mM	2.1074 mL	10.5372 mL	21.0744 mL
5 mM	0.4215 mL	2.1074 mL	4.2149 mL
10 mM	0.2107 mL	1.0537 mL	2.1074 mL
50 mM	0.0421 mL	0.2107 mL	0.4215 mL

Please select the appropriate solvent to prepare the stock solution, according to the solubility of the product in different solvents. Please use it as soon as possible.

Note: The dilution table applies only to solid products. For liquid products, please calculate the stock solution based on the stated concentration and/or density.

Reference

- Wei L, Mackenzie IS, MacDonald TM, George J. Cardiovascular risk associated with sodium-containing medicines. *Expert Opin Drug Saf.* 2014 Nov;13(11):1515-23. doi: 10.1517/14740338.2014.970163. Epub 2014 Oct 10. Review. PubMed PMID: 25300906.
- Cogswell ME, Maalouf J, Elliott P, Loria CM, Patel S, Bowman BA. Use of Urine Biomarkers to Assess Sodium Intake: Challenges and Opportunities. *Annu Rev Nutr.* 2015;35:349-87. doi: 10.1146/annurev-nutr-071714-034322. Epub 2015 May 6. Review. PubMed PMID: 25974702; PubMed Central PMCID: PMC5497310.
- Vegter S, Perna A, Postma MJ, Navis G, Remuzzi G, Ruggenenti P. Sodium intake, ACE inhibition, and progression to ESRD. *J Am Soc Nephrol.* 2012 Jan;23(1):165-73. doi: 10.1681/ASN.2011040430. Epub 2011 Dec 1. PubMed PMID: 22135311; PubMed Central PMCID: PMC3269916.
- Basuray A, Dolansky M, Josephson R, Sattar A, Grady EM, Vehovec A, Gunstad J, Redle J, Fang J, Hughes JW. Dietary sodium adherence is poor in chronic heart failure patients. *J Card Fail.* 2015 Apr;21(4):323-9. doi: 10.1016/j.cardfail.2014.12.016. Epub 2015 Jan 7. PubMed PMID: 25576680; PubMed Central PMCID: PMC4395528.

Inhibitor · Natural Compounds · Compound Libraries · Recombinant Proteins

This product is for Research Use Only · Not for Human or Veterinary or Therapeutic Use

Tel:781-999-4286 E_mail:info@targetmol.com Address:34 Washington Street,Wellesley Hills,MA 02481