

ESP 15228

Chemical Properties

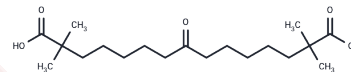
CAS No. : 413624-71-2

Formula: C₁₉H₃₄O₅

Molecular Weight: 342.47

Storage: Powder: -20°C for 3 years | In solvent: -80°C for 1 year

Actual storage temperature shall be subject to the COA.



Biological Description

Description	2,2,14,14-Tetramethyl-8-oxopentadecanedioic acid (compound example II-9) is a ketone used in the research of cardiovascular diseases, dysproteinemias, dyslipidemias, and glucose metabolism disorders.
Targets(IC50)	Others

Solubility Information

Solubility	DMSO: 45 mg/mL (131.4 mM),Sonication is recommended. (< 1 mg/ml refers to the product slightly soluble or insoluble)
In vivo Formulation	10% DMSO+40% PEG300+5% Tween 80+45% Saline: 2 mg/mL (5.84 mM),Sonication is recommended. <i>Please add the solvents sequentially, clarifying the solution as much as possible before adding the next one. Dissolve by heating and/or sonication if necessary. Working solution is recommended to be prepared and used immediately. The formulation provided above is for reference purposes only. In vivo formulations may vary and should be modified based on specific experimental conditions.</i>

Preparing Stock Solutions

	1mg	5mg	10mg
1 mM	2.920 mL	14.5998 mL	29.1996 mL
5 mM	0.584 mL	2.920 mL	5.8399 mL
10 mM	0.292 mL	1.460 mL	2.920 mL
50 mM	0.0584 mL	0.292 mL	0.584 mL

Please select the appropriate solvent to prepare the stock solution, according to the solubility of the product in different solvents. Please use it as soon as possible.

Note: The dilution table applies only to solid products. For liquid products, please calculate the stock solution based on the stated concentration and/or density.

Reference

Jean-Louis H. Dasseux, et al. Ketone compounds and compositions for cholesterol management and related uses. WO2002030860A2.

Inhibitor · Natural Compounds · Compound Libraries · Recombinant Proteins

This product is for Research Use Only · Not for Human or Veterinary or Therapeutic Use

Tel:781-999-4286 E_mail:info@targetmol.com Address:34 Washington Street,Wellesley Hills,MA 02481