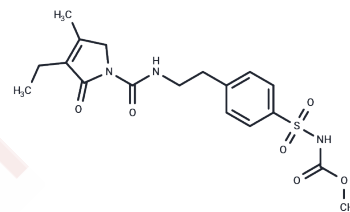


## Glimepiride urethane

## Chemical Properties

CAS No. :	119018-30-3
Formula:	C <sub>18</sub> H <sub>23</sub> N <sub>3</sub> O <sub>6</sub> S
Molecular Weight:	409.46
Storage:	Powder: -20°C for 3 years   In solvent: -80°C for 1 year Actual storage temperature shall be subject to the COA.



## Biological Description

Description	Glimepiride urethane is a third generation sulfonylurea compound, which increases the release of insulin from pancreatic beta cells. In addition, glimepiride increases the activity of intracellular insulin receptors. Glimepiride increases osteoblast proliferation and differentiation, which is thought to be related to its ability to activate the PI3K and Akt pathway. Furthermore, Glimepiride enhances intrinsic peroxisome proliferator-activated receptor $\gamma$ activity. Glimepiride also increases protein expression of glucose transports 1 and 4, and is a potent KIR channel blocker.
Targets(IC50)	Others

## Preparing Stock Solutions

	1mg	5mg	10mg
1 mM	2.4422 mL	12.2112 mL	24.4224 mL
5 mM	0.4884 mL	2.4422 mL	4.8845 mL
10 mM	0.2442 mL	1.2211 mL	2.4422 mL
50 mM	0.0488 mL	0.2442 mL	0.4884 mL

Please select the appropriate solvent to prepare the stock solution, according to the solubility of the product in different solvents. Please use it as soon as possible.

Note: The dilution table applies only to solid products. For liquid products, please calculate the stock solution based on the stated concentration and/or density.

Inhibitor · Natural Compounds · Compound Libraries · Recombinant Proteins

This product is for Research Use Only · Not for Human or Veterinary or Therapeutic Use

Tel:781-999-4286 E\_mail:info@targetmol.com Address:34 Washington Street,Wellesley Hills,MA 02481