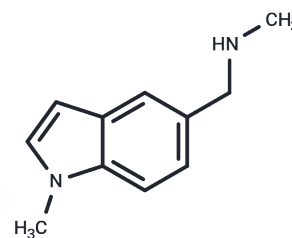


## N-methyl-n-[(1-methyl-1H-indol-5-yl)methyl]amine

## Chemical Properties

CAS No. :	709649-73-0
Formula:	C <sub>11</sub> H <sub>14</sub> N <sub>2</sub>
Molecular Weight:	174.25
Storage:	Pure form: -20°C for 3 years   In solvent: -80°C for 1 year Actual storage temperature shall be subject to the COA.



## Biological Description

Description	N-methyl-n-[(1-methyl-1H-indol-5-yl)methyl]amine, with CAS No. 709649-73-0, is a fragment molecule that serves as an important scaffold for molecular linking, expansion, and modification. N-methyl-n-[(1-methyl-1H-indol-5-yl)methyl]amine provides a structural basis and research tool for the design and screening of novel drug candidates, and is commonly used in drug discovery, drug synthesis, and related research.
-------------	---

## Preparing Stock Solutions

	1mg	5mg	10mg
1 mM	5.7389 mL	28.6944 mL	57.3888 mL
5 mM	1.1478 mL	5.7389 mL	11.4778 mL
10 mM	0.5739 mL	2.8694 mL	5.7389 mL
50 mM	0.1148 mL	0.5739 mL	1.1478 mL

Please select the appropriate solvent to prepare the stock solution, according to the solubility of the product in different solvents. Please use it as soon as possible.

Note: The dilution table applies only to solid products. For liquid products, please calculate the stock solution based on the stated concentration and/or density.

Inhibitor · Natural Compounds · Compound Libraries · Recombinant Proteins

This product is for Research Use Only · Not for Human or Veterinary or Therapeutic Use

Tel: 781-999-4286 E\_mail: info@targetmol.com Address: 34 Washington Street, Wellesley Hills, MA 02481