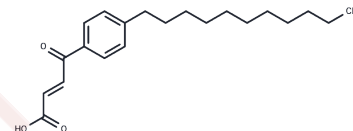


Atg4B-IN-2

Chemical Properties

CAS No. :	2765008-88-4
Formula:	C ₂₁ H ₃₀ O ₃
Molecular Weight:	330.46
Storage:	Powder: -20°C for 3 years In solvent: -80°C for 1 year Actual storage temperature shall be subject to the COA.



Biological Description

Description	Atg4B-IN-2. A potent, selective Atg4B inhibitor with anticancer activity, inhibits both Atg4B and PLA2, enabling autophagy that counteracts the anticancer activity of anti-desiccation-resistant prostate cancer drugs.
Targets(IC50)	Autophagy,Cysteine Protease,Phospholipase,ATG
In vitro	In a dose-dependent manner, Atg4B-IN-2 (compound 21f) (1-10 μ M; 2 hours) restores p62 expression in cells treated with amino acid-free (AF) conditions [1]. At concentrations of 1 and 5 μ M (2 hours), Atg4B-IN-2 moderately decreases autophagic vesicles at 1 μ M and almost completely inhibits autophagy at 5 μ M [1]. At a concentration of 5 μ M (2 hours), Atg4B-IN-2 inhibits Abi-induced autophagy, significantly enhances apoptotic cell death, and increases sensitivity to Abi [1].

Solubility Information

Solubility	DMSO: 80 mg/mL (242.09 mM),Sonication is recommended. (< 1 mg/ml refers to the product slightly soluble or insoluble)
------------	--

Preparing Stock Solutions

	1mg	5mg	10mg
1 mM	3.0261 mL	15.1304 mL	30.2608 mL
5 mM	0.6052 mL	3.0261 mL	6.0522 mL
10 mM	0.3026 mL	1.513 mL	3.0261 mL
50 mM	0.0605 mL	0.3026 mL	0.6052 mL

Please select the appropriate solvent to prepare the stock solution, according to the solubility of the product in different solvents. Please use it as soon as possible.

Note: The dilution table applies only to solid products. For liquid products, please calculate the stock solution based on the stated concentration and/or density.

Reference

Kudo Y, Endo S, Fujita M, et al. Discovery and Structure-Based Optimization of Novel Atg4B Inhibitors for the Treatment of Castration-Resistant Prostate Cancer. J Med Chem. 2022;65(6):4878-4892.

Inhibitor · Natural Compounds · Compound Libraries · Recombinant Proteins

This product is for Research Use Only. Not for Human or Veterinary or Therapeutic Use

Tel:781-999-4286 E_mail:info@targetmol.com Address:34 Washington Street,Wellesley Hills,MA 02481