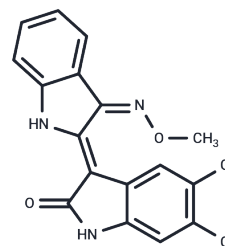


KY19382

Chemical Properties

CAS No. : 2226664-93-1
 Formula: C17H11Cl2N3O2
 Molecular Weight: 360.19
 Storage: Powder: -20°C for 3 years | In solvent: -80°C for 1 year
Actual storage temperature shall be subject to the COA.



Biological Description

Description	KY19382 (2H-Indol-2-one, 5,6-dichloro-3-[1,3-dihydro-3-(methoxyimino)-2H-indol-2-ylidene]-1,3-dihydro-Ky19382) is a potent and orally active dual inhibitor of CXXC5-DVL and GSK3 β (IC50s of 19 and 10 nM, respectively). It activates Wnt/ β -catenin signaling through inhibitory effects on both CXXC5-DVL interaction and GSK3 β activity. KY19382 can be used for the research of high fat diet (HFD) induced metabolic diseases.
Targets(IC50)	GSK-3,Wnt/beta-catenin

Solubility Information

Solubility	DMSO: 5 mg/mL (13.88 mM),Sonication is recommended. (< 1 mg/ml refers to the product slightly soluble or insoluble)
------------	--

Preparing Stock Solutions

	1mg	5mg	10mg
1 mM	2.7763 mL	13.8816 mL	27.7631 mL
5 mM	0.5553 mL	2.7763 mL	5.5526 mL
10 mM	0.2776 mL	1.3882 mL	2.7763 mL
50 mM	0.0555 mL	0.2776 mL	0.5553 mL

Please select the appropriate solvent to prepare the stock solution, according to the solubility of the product in different solvents. Please use it as soon as possible.

Note: The dilution table applies only to solid products. For liquid products, please calculate the stock solution based on the stated concentration and/or density.

Inhibitor · Natural Compounds · Compound Libraries · Recombinant Proteins

This product is for Research Use Only · Not for Human or Veterinary or Therapeutic Use

Tel:781-999-4286 E_mail:info@targetmol.com Address:34 Washington Street,Wellesley Hills,MA 02481