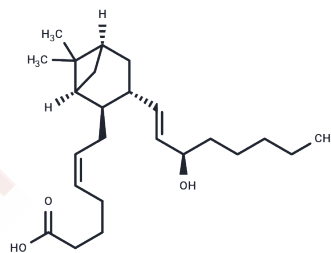


## 15(R)-Pinane Thromboxane A2

## Chemical Properties

CAS No. :	71154-83-1
Formula:	C <sub>24</sub> H <sub>40</sub> O <sub>3</sub>
Molecular Weight:	376.581
Storage:	Powder: -20°C for 3 years   In solvent: -80°C for 1 year Actual storage temperature shall be subject to the COA.



## Biological Description

Description	15(R)-Pinane thromboxane A2 is the (R)-epimer of pinane thromboxane A2 . 15(R)-PTA2 does not inhibit collagen-induced platelet aggregation (IC <sub>50</sub> s = 120-130 μM). It does not affect gastric tone in isolated rat gastric fundus when used at concentrations of 0.5 or 1.5 μg/ml and is less effective than PTA2 at inhibiting prostaglandin-induced contraction of isolated rat stomach muscle.
Targets(IC <sub>50</sub> )	Others,Prostaglandin Receptor

## Solubility Information

Solubility	Ethanol: 100 mg/mL (265.55 mM),Sonication is recommended. DMSO: 25 mg/mL (66.39 mM),Sonication is recommended. PBS (pH 7.2): 0.15 mg/mL (0.4 mM),Sonication is recommended. DMF: 50 mg/mL (132.77 mM),Sonication is recommended. (< 1 mg/ml refers to the product slightly soluble or insoluble)
------------	--

## Preparing Stock Solutions

	1mg	5mg	10mg
1 mM	2.6555 mL	13.2774 mL	26.5548 mL
5 mM	0.5311 mL	2.6555 mL	5.311 mL
10 mM	0.2655 mL	1.3277 mL	2.6555 mL
50 mM	0.0531 mL	0.2655 mL	0.5311 mL

Please select the appropriate solvent to prepare the stock solution, according to the solubility of the product in different solvents. Please use it as soon as possible.

Note: The dilution table applies only to solid products. For liquid products, please calculate the stock solution based on the stated concentration and/or density.

**Inhibitor · Natural Compounds · Compound Libraries · Recombinant Proteins**

This product is for Research Use Only · Not for Human or Veterinary or Therapeutic Use

Tel:781-999-4286 E\_mail:info@targetmol.com Address:34 Washington Street,Wellesley Hills,MA 02481