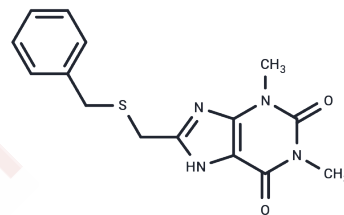


TPBM

Chemical Properties

CAS No. :	6466-43-9
Formula:	C ₁₅ H ₁₆ N ₄ O ₂ S
Molecular Weight:	316.38
Storage:	Powder: -20°C for 3 years In solvent: -80°C for 1 year Actual storage temperature shall be subject to the COA.



Biological Description

Description	TPBM is a potent estrogen receptor α (ER α) inhibitor with an IC ₅₀ value of 9 μ M for disruption of 17 β -estradiol-ER α interaction, effectively reducing E2-ER α recruitment to endogenous estrogen-responsive genes and inhibiting E2-dependent proliferation of ER α -positive cancer cells with an IC ₅₀ of 5 μ M, while remaining non-toxic and not affecting estrogen-independent cell growth, making it a selective probe for ER α signaling research.
Targets(IC50)	Estrogen Receptor/ERR
In vitro	TPBM inhibits the binding of E2-liganded ER α to EREs with an IC ₅₀ of 9 μ M. By obstructing this interaction, the molecule blocks estrogen-dependent transcriptional activity.

Solubility Information

Solubility	DMSO: 80 mg/mL (252.86 mM), Sonication is recommended. (< 1 mg/ml refers to the product slightly soluble or insoluble)
------------	---

Preparing Stock Solutions

	1mg	5mg	10mg
1 mM	3.1608 mL	15.8038 mL	31.6076 mL
5 mM	0.6322 mL	3.1608 mL	6.3215 mL
10 mM	0.3161 mL	1.5804 mL	3.1608 mL
50 mM	0.0632 mL	0.3161 mL	0.6322 mL

Please select the appropriate solvent to prepare the stock solution, according to the solubility of the product in different solvents. Please use it as soon as possible.

Note: The dilution table applies only to solid products. For liquid products, please calculate the stock solution based on the stated concentration and/or density.

Reference

Mao C, et al. A new small molecule inhibitor of estrogen receptor α binding to estrogen response elements blocks estrogen-dependent growth of cancer cells. J Biol Chem. 2008;283(19):12819-12830.

Inhibitor · Natural Compounds · Compound Libraries · Recombinant Proteins

This product is for Research Use Only · Not for Human or Veterinary or Therapeutic Use

Tel:781-999-4286 E_mail:info@targetmol.com Address:34 Washington Street,Wellesley Hills,MA 02481