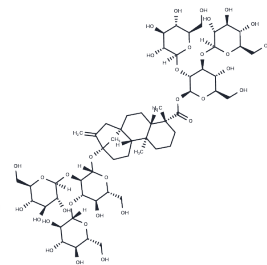


Rebaudioside M

Chemical Properties

CAS No. :	1220616-44-3
Formula:	C ₅₆ H ₉₀ O ₃₃
Molecular Weight:	1291.29
Storage:	Powder: -20°C for 3 years In solvent: -80°C for 1 year Actual storage temperature shall be subject to the COA.



Biological Description

Description	Rebaudioside M is a natural non-calorie sweetener isolated from <i>Stevia rebaudiana</i> Bertoni, is a glycoside of the ent-kaurene diterpenoid aglycone.
Targets(IC50)	Others

Solubility Information

Solubility	DMSO: 250 mg/mL (193.6 mM), Sonication is recommended. (< 1 mg/ml refers to the product slightly soluble or insoluble)
In vivo Formulation	10% DMSO+90% Saline: 10 mg/mL (7.74 mM), Solution. 10% DMSO+40% PEG300+5% Tween 80+45% Saline: 2 mg/mL (1.55 mM), Sonication is recommended. <i>Please add the solvents sequentially, clarifying the solution as much as possible before adding the next one. Dissolve by heating and/or sonication if necessary. Working solution is recommended to be prepared and used immediately. The formulation provided above is for reference purposes only. In vivo formulations may vary and should be modified based on specific experimental conditions.</i>

Preparing Stock Solutions

	1mg	5mg	10mg
1 mM	0.7744 mL	3.8721 mL	7.7442 mL
5 mM	0.1549 mL	0.7744 mL	1.5488 mL
10 mM	0.0774 mL	0.3872 mL	0.7744 mL
50 mM	0.0155 mL	0.0774 mL	0.1549 mL

Please select the appropriate solvent to prepare the stock solution, according to the solubility of the product in different solvents. Please use it as soon as possible.

Note: The dilution table applies only to solid products. For liquid products, please calculate the stock solution based on the stated concentration and/or density.

Reference

Indra P , Avetik M , Cynthia B . Development of Next Generation Stevia Sweetener: Rebaudioside M[J]. Foods, 2014, 3(1):162-175.

Inhibitor · Natural Compounds · Compound Libraries · Recombinant Proteins

This product is for Research Use Only· Not for Human or Veterinary or Therapeutic Use

Tel:781-999-4286 E_mail:info@targetmol.com Address:34 Washington Street,Wellesley Hills,MA 02481