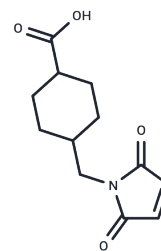


N-(4-Carboxycyclohexylmethyl)maleimide

Chemical Properties

CAS No. :	64987-82-2
Formula:	C ₁₂ H ₁₅ NO ₄
Molecular Weight:	237.25
Storage:	Powder: -20°C for 3 years In solvent: -80°C for 1 year Actual storage temperature shall be subject to the COA.



Biological Description

Description	N-(4-Carboxycyclohexylmethyl)maleimide is an alkyl chain-like PROTAC linker that can be used to synthesize PROTAC molecules.
Targets(IC50)	PROTAC Linker

Solubility Information

Solubility	DMSO: 180 mg/mL (758.69 mM), Sonication is recommended. (< 1 mg/ml refers to the product slightly soluble or insoluble)
In vivo Formulation	10% DMSO+40% PEG300+5% Tween-80+45% Saline: 5 mg/mL (21.07 mM), Sonication is recommended. <i>Please add the solvents sequentially, clarifying the solution as much as possible before adding the next one. Dissolve by heating and/or sonication if necessary. Working solution is recommended to be prepared and used immediately. The formulation provided above is for reference purposes only. In vivo formulations may vary and should be modified based on specific experimental conditions.</i>

Preparing Stock Solutions

	1mg	5mg	10mg
1 mM	4.215 mL	21.0748 mL	42.1496 mL
5 mM	0.843 mL	4.215 mL	8.4299 mL
10 mM	0.4215 mL	2.1075 mL	4.215 mL
50 mM	0.0843 mL	0.4215 mL	0.843 mL

Please select the appropriate solvent to prepare the stock solution, according to the solubility of the product in different solvents. Please use it as soon as possible.

Note: The dilution table applies only to solid products. For liquid products, please calculate the stock solution based on the stated concentration and/or density.

Reference

An S, et al. Small-molecule PROTACs: An emerging and promising approach for the development of targeted therapy drugs. EBioMedicine. 2018 Oct;36:553-562

Inhibitor · Natural Compounds · Compound Libraries · Recombinant Proteins

This product is for Research Use Only · Not for Human or Veterinary or Therapeutic Use

Tel:781-999-4286 E_mail:info@targetmol.com Address:34 Washington Street,Wellesley Hills,MA 02481