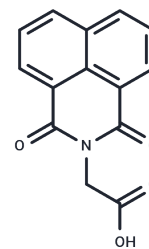


Alrestatin

Chemical Properties

CAS No. :	51411-04-2
Formula:	C ₁₄ H ₉ NO ₄
Molecular Weight:	255.2256
Storage:	Powder: -20°C for 3 years In solvent: -80°C for 1 year Actual storage temperature shall be subject to the COA.



Biological Description

Description	Alrestatin (AY-22284) is a specific inhibitor of aldose reductase and attenuates glucose-induced angiotensin II production in rat vascular smooth muscle in vitro.
Targets(IC50)	Reductase

Solubility Information

Solubility	DMSO: 25 mg/mL (97.95 mM),Sonication is recommended. H ₂ O: Insoluble, (< 1 mg/ml refers to the product slightly soluble or insoluble)
In vivo Formulation	10% DMSO+40% PEG300+5% Tween 80+45% Saline: 2 mg/mL (7.84 mM),Sonication is recommended. <i>Please add the solvents sequentially, clarifying the solution as much as possible before adding the next one. Dissolve by heating and/or sonication if necessary. Working solution is recommended to be prepared and used immediately. The formulation provided above is for reference purposes only. In vivo formulations may vary and should be modified based on specific experimental conditions.</i>

Preparing Stock Solutions

	1mg	5mg	10mg
1 mM	3.918 mL	19.5902 mL	39.1803 mL
5 mM	0.7836 mL	3.918 mL	7.8361 mL
10 mM	0.3918 mL	1.959 mL	3.918 mL
50 mM	0.0784 mL	0.3918 mL	0.7836 mL

Please select the appropriate solvent to prepare the stock solution, according to the solubility of the product in different solvents. Please use it as soon as possible.

Note: The dilution table applies only to solid products. For liquid products, please calculate the stock solution based on the stated concentration and/or density.

Reference

Barski OA, et al. The C-terminal loop of aldehyde reductase determines the substrate and inhibitor specificity. *Biochemistry*. 1996 Nov 12;35(45):14276-80.

Lavrentyev EN, et al. Mechanism of high glucose induced angiotensin II production in rat vascular smooth muscle cells. *Circ Res*. 2007 Aug 31;101(5):455-64.

Inhibitor · Natural Compounds · Compound Libraries · Recombinant Proteins

This product is for Research Use Only· Not for Human or Veterinary or Therapeutic Use

Tel:781-999-4286 E_mail:info@targetmol.com Address:34 Washington Street,Wellesley Hills,MA 02481