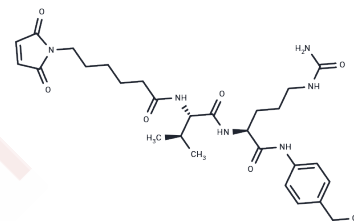


MC-Val-Cit-PAB

Chemical Properties

CAS No. :	159857-80-4
Formula:	C ₂₈ H ₄₀ N ₆ O ₇
Molecular Weight:	572.65
Storage:	Keep away from direct sunlight Powder: -20°C for 3 years In solvent: -80°C for 1 year <i>Actual storage temperature shall be subject to the COA.</i>



Biological Description

Description	MC-Val-Cit-PAB is a cathepsin cleavable ADC linker that is used for making antibody-drug conjugate. FDA approved drugs such as brentuximab vedotin use this linker.
Targets(IC50)	AChR,ADC Linker

Solubility Information

Solubility	DMSO: 22 mg/mL (38.42 mM),Sonication is recommended. (< 1 mg/ml refers to the product slightly soluble or insoluble)
In vivo Formulation	10% DMSO+40% PEG300+5% Tween 80+45% Saline: 5 mg/mL (8.73 mM),Sonication is recommended. <i>Please add the solvents sequentially, clarifying the solution as much as possible before adding the next one. Dissolve by heating and/or sonication if necessary. Working solution is recommended to be prepared and used immediately. The formulation provided above is for reference purposes only. In vivo formulations may vary and should be modified based on specific experimental conditions.</i>

Preparing Stock Solutions

	1mg	5mg	10mg
1 mM	1.7463 mL	8.7313 mL	17.4627 mL
5 mM	0.3493 mL	1.7463 mL	3.4925 mL
10 mM	0.1746 mL	0.8731 mL	1.7463 mL
50 mM	0.0349 mL	0.1746 mL	0.3493 mL

Please select the appropriate solvent to prepare the stock solution, according to the solubility of the product in different solvents. Please use it as soon as possible.

Note: The dilution table applies only to solid products. For liquid products, please calculate the stock solution based on the stated concentration and/or density.

Reference

Anti-cd70 antibody-drug conjugates and their use for the treatment of cancer and immune disorders

Inhibitor · Natural Compounds · Compound Libraries · Recombinant Proteins

This product is for Research Use Only · Not for Human or Veterinary or Therapeutic Use

Tel:781-999-4286 E_mail:info@targetmol.com Address:34 Washington Street,Wellesley Hills,MA 02481