

## Enkephalin-leu, ala(2)-ser(6)-

## Chemical Properties

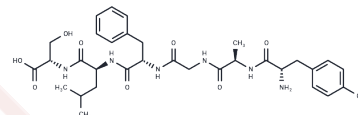
CAS No. : 132930-82-6

Formula: C<sub>32</sub>H<sub>44</sub>N<sub>6</sub>O<sub>9</sub>

Molecular Weight: 656.73

Storage: Powder: -20°C for 3 years | In solvent: -80°C for 1 year

Actual storage temperature shall be subject to the COA.



## Biological Description

Description	Enkephalin-leu, ala(2)-ser(6)- is an active compound at the delta (non-complexed) opioid receptor.
Targets(IC50)	Others

## Preparing Stock Solutions

	1mg	5mg	10mg
1 mM	1.5227 mL	7.6135 mL	15.227 mL
5 mM	0.3045 mL	1.5227 mL	3.0454 mL
10 mM	0.1523 mL	0.7613 mL	1.5227 mL
50 mM	0.0305 mL	0.1523 mL	0.3045 mL

Please select the appropriate solvent to prepare the stock solution, according to the solubility of the product in different solvents. Please use it as soon as possible.

Note: The dilution table applies only to solid products. For liquid products, please calculate the stock solution based on the stated concentration and/or density.

## Reference

Fedotov VP, Ivanenko TI, Gudoshnikov VI, Bushueva GI, Batrameeva LA. [Effect of met enkephalin, leu enkephalin and their retro analogs on the lactotropic function of the pituitary gland]. Probl Endokrinol (Mosk). 1983 Sep-Oct; 29(5):48-54. Russian. PubMed PMID: 6647430.

Ozalp A, Barroso B, Meijer J, van den Beld C. Pre-analytical stability of methionine-enkephalin and leucine-enkephalin in human plasma. Anal Biochem. 2018 Jul 4. pii: S0003-2697(18)30256-2. doi: 10.1016/j.ab.2018.07.001. [Epub ahead of print] PubMed PMID: 29981318.

**Inhibitor · Natural Compounds · Compound Libraries · Recombinant Proteins**

This product is for Research Use Only · Not for Human or Veterinary or Therapeutic Use

Tel:781-999-4286 E\_mail:info@targetmol.com Address:34 Washington Street,Wellesley Hills,MA 02481