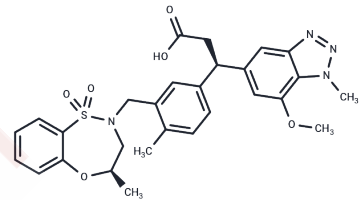


KI696 isomer

## Chemical Properties

CAS No. : 1799974-69-8  
 Formula: C<sub>28</sub>H<sub>30</sub>N<sub>4</sub>O<sub>6</sub>S  
 Molecular Weight: 550.63  
 Storage: Powder: -20°C for 3 years | In solvent: -80°C for 1 year  
 Actual storage temperature shall be subject to the COA.



## Biological Description

Description	KI696 isomer is an isomer of KI696, a low affinity probe for the study of immune and metabolic diseases.
Targets(IC50)	Nrf2

## Solubility Information

Solubility	DMSO: 100 mg/mL (181.61 mM),Sonication is recommended. (< 1 mg/ml refers to the product slightly soluble or insoluble)
In vivo Formulation	10% DMSO+40% PEG300+5% Tween 80+45% Saline: 4 mg/mL (7.26 mM),Sonication is recommended. <i>Please add the solvents sequentially, clarifying the solution as much as possible before adding the next one. Dissolve by heating and/or sonication if necessary. Working solution is recommended to be prepared and used immediately. The formulation provided above is for reference purposes only. In vivo formulations may vary and should be modified based on specific experimental conditions.</i>

## Preparing Stock Solutions

	1mg	5mg	10mg
1 mM	1.8161 mL	9.0805 mL	18.161 mL
5 mM	0.3632 mL	1.8161 mL	3.6322 mL
10 mM	0.1816 mL	0.9081 mL	1.8161 mL
50 mM	0.0363 mL	0.1816 mL	0.3632 mL

Please select the appropriate solvent to prepare the stock solution, according to the solubility of the product in different solvents. Please use it as soon as possible.

Note: The dilution table applies only to solid products. For liquid products, please calculate the stock solution based on the stated concentration and/or density.

Reference

Du G,et al. Exploring the target scope of KEAP1 E3 ligase-based PROTACs. Cell Chem Biol. 2022 Oct 20;29(10):1470-1481.e31.

**Inhibitor · Natural Compounds · Compound Libraries · Recombinant Proteins**

This product is for Research Use Only· Not for Human or Veterinary or Therapeutic Use

Tel:781-999-4286 E\_mail:info@targetmol.com Address:34 Washington Street,Wellesley Hills,MA 02481