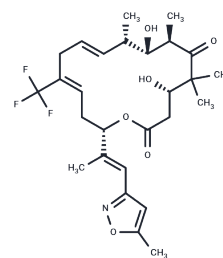


## Iso-Fludelone

## Chemical Properties

CAS No. :	691868-19-6
Formula:	C <sub>27</sub> H <sub>36</sub> F <sub>3</sub> N <sub>2</sub> O <sub>6</sub>
Molecular Weight:	527.57
Storage:	Powder: -20°C for 3 years   In solvent: -80°C for 1 year Actual storage temperature shall be subject to the COA.



## Biological Description

Description	Iso-Fludelone is the third-generation epothilone B analogue with potential anti-mitotic and antineoplastic activities. Iso-fludelone binds to tubulin and induces microtubule polymerization and stabilizes microtubules against depolymerization, which may result in the inhibition of cell division, the induction of G2/M arrest, and apoptosis. Compared to other generations of epothilones, iso-fludelone exhibits increased stability, water solubility, potency, duration of action, tumor penetration as well as reduced toxicity. In addition, this agent is not a substrate of the P-glycoprotein (P-gp), a multidrug resistance pump often overexpressed in cancer cells. Check for active clinical trials or closed clinical trials using this agent. (NCI Thesaurus).
Targets(IC50)	Others, Microtubule Associated

## Preparing Stock Solutions

	1mg	5mg	10mg
1 mM	1.8955 mL	9.4774 mL	18.9548 mL
5 mM	0.3791 mL	1.8955 mL	3.791 mL
10 mM	0.1895 mL	0.9477 mL	1.8955 mL
50 mM	0.0379 mL	0.1895 mL	0.3791 mL

Please select the appropriate solvent to prepare the stock solution, according to the solubility of the product in different solvents. Please use it as soon as possible.

Note: The dilution table applies only to solid products. For liquid products, please calculate the stock solution based on the stated concentration and/or density.

**Inhibitor · Natural Compounds · Compound Libraries · Recombinant Proteins**

This product is for Research Use Only · Not for Human or Veterinary or Therapeutic Use

Tel: 781-999-4286 E\_mail: info@targetmol.com Address: 34 Washington Street, Wellesley Hills, MA 02481