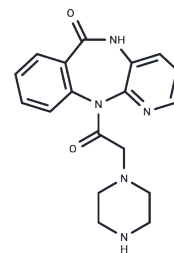


LS 822

## Chemical Properties

CAS No. : 63257-31-8  
 Formula: C<sub>18</sub>H<sub>19</sub>N<sub>5</sub>O<sub>2</sub>  
 Molecular Weight: 337.38  
 Storage: Powder: -20°C for 3 years | In solvent: -80°C for 1 year  
 Actual storage temperature shall be subject to the COA.



## Biological Description

Description	LS 822 is a metabolite of pirenzepine.
Targets(IC50)	Others

## Preparing Stock Solutions

	1mg	5mg	10mg
1 mM	2.964 mL	14.8201 mL	29.6402 mL
5 mM	0.5928 mL	2.964 mL	5.928 mL
10 mM	0.2964 mL	1.482 mL	2.964 mL
50 mM	0.0593 mL	0.2964 mL	0.5928 mL

Please select the appropriate solvent to prepare the stock solution, according to the solubility of the product in different solvents. Please use it as soon as possible.

Note: The dilution table applies only to solid products. For liquid products, please calculate the stock solution based on the stated concentration and/or density.

## Reference

Homon CA, Esber HJ, Zavorskas P, Tanswell P, Farina PR. A selective radioimmunoassay for the determination of pirenzepine in plasma and urine. Ther Drug Monit. 1987 Jun;9(2):236-42. PubMed PMID: 3617165.

Inhibitor · Natural Compounds · Compound Libraries · Recombinant Proteins

This product is for Research Use Only · Not for Human or Veterinary or Therapeutic Use

Tel:781-999-4286 E\_mail:info@targetmol.com Address:34 Washington Street,Wellesley Hills,MA 02481