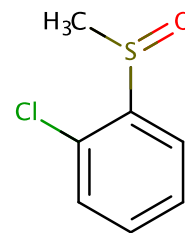


## 1-Chloro-2-(methylsulfinyl)benzene

## Chemical Properties

CAS No. :	7321-57-5
Formula:	C7H7ClOS
Molecular Weight:	174.65
Storage:	Pure form: -20°C for 3 years   In solvent: -80°C for 1 year

Actual storage temperature shall be subject to the COA.



## Biological Description

Description	1-Chloro-2-(methylsulfinyl)benzene, with CAS No. 7321-57-5, is a fragment molecule that serves as an important scaffold for molecular linking, expansion, and modification. 1-Chloro-2-(methylsulfinyl)benzene provides a structural basis and research tool for the design and screening of novel drug candidates, and is commonly used in drug discovery, drug synthesis, and related research.
-------------	---

## Preparing Stock Solutions

	1mg	5mg	10mg
1 mM	5.7257 mL	28.6287 mL	57.2574 mL
5 mM	1.1451 mL	5.7257 mL	11.4515 mL
10 mM	0.5726 mL	2.8629 mL	5.7257 mL
50 mM	0.1145 mL	0.5726 mL	1.1451 mL

Please select the appropriate solvent to prepare the stock solution, according to the solubility of the product in different solvents. Please use it as soon as possible.

Note: The dilution table applies only to solid products. For liquid products, please calculate the stock solution based on the stated concentration and/or density.

Inhibitor · Natural Compounds · Compound Libraries · Recombinant Proteins

This product is for Research Use Only · Not for Human or Veterinary or Therapeutic Use

Tel: 781-999-4286 E\_mail: info@targetmol.com Address: 34 Washington Street, Wellesley Hills, MA 02481