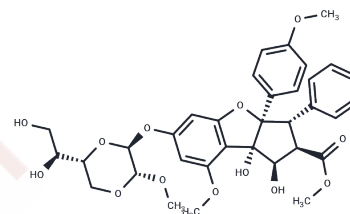


Episilvestrol

Chemical Properties

CAS No. :	697235-39-5
Formula:	C ₃₄ H ₃₈ O ₁₃
Molecular Weight:	654.66
Storage:	Powder: -20°C for 3 years In solvent: -80°C for 1 year Actual storage temperature shall be subject to the COA.



Biological Description

Description	Episilvestrol is a specific eIF4A-targeting translation inhibitor, with antitumor activity. Episilvestrol is a derivative of silvestrol, isolated from the fruits and twigs of <i>Aglaia silvestris</i> .
Targets(IC50)	Others, Autophagy, PERK
In vitro	Episilvestrol is cytotoxic activity against several human cancer cell lines, such as Lu1, LNCaP, MCF-7 and HUVEC cells, with ED50s of 3.8, 3.8, 5.5 and 15.3 nM, respectively. Episilvestrol is a specific eIF4A-targeting translation inhibitor, with antitumor activity.? Episilvestrol also suppresses HK1 cells and EBV-positive C666.1 NPC cells.

Preparing Stock Solutions

	1mg	5mg	10mg
1 mM	1.5275 mL	7.6376 mL	15.2751 mL
5 mM	0.3055 mL	1.5275 mL	3.055 mL
10 mM	0.1528 mL	0.7638 mL	1.5275 mL
50 mM	0.0306 mL	0.1528 mL	0.3055 mL

Please select the appropriate solvent to prepare the stock solution, according to the solubility of the product in different solvents. Please use it as soon as possible.

Note: The dilution table applies only to solid products. For liquid products, please calculate the stock solution based on the stated concentration and/or density.

Reference

- Chambers JM, et al. Synthesis of biotinylated episilvestrol: highly selective targeting of the translation factors eIF4A1/II. *Org Lett*. 2013 Mar 15;15(6):1406-9.
- Hwang BY, et al. Silvestrol and episilvestrol, potential anticancer rocaglate derivatives from *Aglaia silvestris*. *J Org Chem*. 2004 May 14;69(10):3350-8.
- Daker M, et al. Inhibition of nasopharyngeal carcinoma cell proliferation and synergism of cisplatin with silvestrol and episilvestrol isolated from *Aglaia stellatopilosa*. *Exp Ther Med*. 2016 Jun;11(6):2117-2126. Epub 2016 Mar 29.

Inhibitor · Natural Compounds · Compound Libraries · Recombinant Proteins

This product is for Research Use Only · Not for Human or Veterinary or Therapeutic Use

Tel:781-999-4286 E_mail:info@targetmol.com Address:34 Washington Street,Wellesley Hills,MA 02481