

Mvt 101

Chemical Properties

CAS No. : 125552-93-4

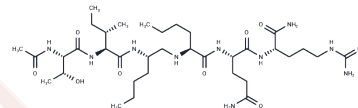
Formula: C₃₅H₆₇N₁₁O₈

Molecular Weight: 769.99

Keep away from moisture

Storage: Powder: -20°C for 3 years | In solvent: -80°C for 1 year

Actual storage temperature shall be subject to the COA.



Biological Description

Description	Mvt 101 is a peptide inhibitor.
Targets(IC50)	HIV Protease

Preparing Stock Solutions

	1mg	5mg	10mg
1 mM	1.2987 mL	6.4936 mL	12.9872 mL
5 mM	0.2597 mL	1.2987 mL	2.5974 mL
10 mM	0.1299 mL	0.6494 mL	1.2987 mL
50 mM	0.026 mL	0.1299 mL	0.2597 mL

Please select the appropriate solvent to prepare the stock solution, according to the solubility of the product in different solvents. Please use it as soon as possible.

Note: The dilution table applies only to solid products. For liquid products, please calculate the stock solution based on the stated concentration and/or density.

Reference

Miller M. The early years of retroviral protease crystal structures. *Biopolymers*. 2010;94(4):521-9. doi: 10.1002/bip.21387. Review. PubMed PMID: 20593466; PubMed Central PMCID: PMC2938048.

Johnson EC, Malito E, Shen Y, Pentelute B, Rich D, Florián J, Tang WJ, Kent SB. Insights from atomic-resolution X-ray structures of chemically synthesized HIV-1 protease in complex with inhibitors. *J Mol Biol*. 2007 Oct 26;373(3):573-86. Epub 2007 Aug 2. PubMed PMID: 17869270; PubMed Central PMCID: PMC2094697.

Torbeev VY, Kent SB. Convergent chemical synthesis and crystal structure of a 203 amino acid "covalent dimer" HIV-1 protease enzyme molecule. *Angew Chem Int Ed Engl*. 2007;46(10):1667-70. PubMed PMID: 17397076.

Trylska J, Bała P, Geller M, Grochowski P. Molecular dynamics simulations of the first steps of the reaction catalyzed by HIV-1 protease. *Biophys J*. 2002 Aug;83(2):794-807. PubMed PMID: 12124265; PubMed Central PMCID: PMC1302187.

Inhibitor · Natural Compounds · Compound Libraries · Recombinant Proteins

This product is for Research Use Only · Not for Human or Veterinary or Therapeutic Use

Tel:781-999-4286 E_mail:info@targetmol.com Address:34 Washington Street,Wellesley Hills,MA 02481