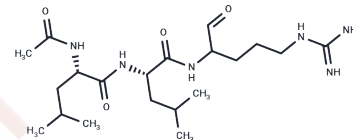


## Leupeptin

## Chemical Properties

CAS No. :	24365-47-7
Formula:	C <sub>20</sub> H <sub>38</sub> N <sub>6</sub> O <sub>4</sub>
Molecular Weight:	426.562
Storage:	Keep away from moisture Powder: -20°C for 3 years   In solvent: -80°C for 1 year <small>Actual storage temperature shall be subject to the COA.</small>



## Biological Description

Description	Leupeptin is a competitive protease inhibitor produced by actinomycetes. Leupeptin can inhibit cysteine, serine and threonine peptidases. Leupeptin inhibits serine proteinases (trypsin (K <sub>i</sub> =3.5 nM), plasmin (K <sub>i</sub> = 3.4 nM), porcine kallikrein), and cysteine proteinases (papain, cathepsin B (K <sub>i</sub> = 4.1 nM), endoproteinase Lys-C). Leupeptin does not inhibit α-chymotrypsin or thrombin.
Targets(IC50)	Cysteine Protease,Serine Protease,Virus Protease

## Preparing Stock Solutions

	1mg	5mg	10mg
1 mM	2.3443 mL	11.7217 mL	23.4434 mL
5 mM	0.4689 mL	2.3443 mL	4.6887 mL
10 mM	0.2344 mL	1.1722 mL	2.3443 mL
50 mM	0.0469 mL	0.2344 mL	0.4689 mL

Please select the appropriate solvent to prepare the stock solution, according to the solubility of the product in different solvents. Please use it as soon as possible.

Note: The dilution table applies only to solid products. For liquid products, please calculate the stock solution based on the stated concentration and/or density.

### Reference

- Sharma P, Rayavara K, Ito D, Basore K, Desai SA. A CLAG3 mutation in an amphipathic transmembrane domain alters malaria parasite nutrient channels and confers leupeptin resistance. *Infect Immun*. 2015 Jun;83(6):2566-74. doi: 10.1128/IAI.02966-14. Epub 2015 Apr 13. PubMed PMID: 25870226; PubMed Central PMCID: PMC4432768.
- Hu J, Zhu Z, Chen Z, et al. Alteration in Rab11-mediated endocytic trafficking of LDL receptor contributes to angiotensin II-induced cholesterol accumulation and injury in podocytes. *Cell Proliferation*. 2022: e13229
- Feng C, Yu W, Jiang Y, et al. Structural and biochemical characterization of a zinc metallopeptidase from *Porphyromonas gingivalis*. *Biochemical and Biophysical Research Communications*. 2024: 151201.
- Childers MK, Bogan JR, Bogan DJ, Greiner H, Holder M, Grange RW, Kornegay JN. Chronic administration of a leupeptin-derived calpain inhibitor fails to ameliorate severe muscle pathology in a canine model of duchenne muscular dystrophy. *Front Pharmacol*. 2012 Jan 9;2:89. doi: 10.3389/fphar.2011.00089. eCollection 2011. PubMed PMID: 22291646; PubMed Central PMCID: PMC3253583.
- Gavriel H, Shulman A, Stracher A, Sohmer H. Leupeptin reduces impulse noise induced hearing loss. *J Occup Med Toxicol*. 2011 Dec 29;6:38. doi: 10.1186/1745-6673-6-38. PubMed PMID: 22206578; PubMed Central PMCID: PMC3286414.
- Hausott B, Vallant N, Hochfilzer M, Mangger S, Irschick R, Haugsten EM, Klimaschewski L. Leupeptin enhances cell surface localization of fibroblast growth factor receptor 1 in adult sensory neurons by increased recycling. *Eur J Cell Biol*. 2012 Feb;91(2):129-38. doi: 10.1016/j.ejcb.2011.09.009. Epub 2011 Dec 9. PubMed PMID: 22169219.

**Inhibitor · Natural Compounds · Compound Libraries · Recombinant Proteins**

This product is for Research Use Only · Not for Human or Veterinary or Therapeutic Use

Tel: 781-999-4286    E\_mail: info@targetmol.com    Address: 34 Washington Street, Wellesley Hills, MA 02481